

## Accessories

Epson offers a wide range of accessories including spare lamps, active speakers and wall mounts. To view the full range visit [www.epson-europe.com](http://www.epson-europe.com)

ACCESSORY	Interactive Pens ELPPN04A (orange) / ELPPN04B (blue)	Spare Lamp ELPLP87	Air Filter ELPAF47	Control and Connection Box ELPCB02
SKU CODE	V12H666010 / V12H667010	V13H010L87	V13H134A47	V12H614040 / V12H614040DA
				
ACCESSORY	Wall Mount ELPMB45	Portable Visualiser ELPDC06	Wireless LAN Adapter ELPAP07	Active Speakers ELPSP02
SKU CODE	V12H706040	V12H321003	V12H418P13	V12H467040 / V12H467040DA
				

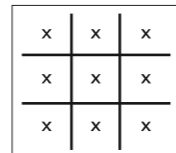
## 3LCD technology

3LCD technology is at the heart of every Epson projector. It blends the final colours before they are projected, resulting in a stable image with no risk of colour break up. Colours are vivid, faithfully produced and easier on the eyes, so it's no wonder Epson is the world's number one projector manufacturer\*<sup>4</sup>.



## Amazing White and Colour Light Output (CLO)

Delivering equally high White and Colour Light Output, the EB-500 Series from Epson ensures that bright, vivid and authentic colour rich detail can be seen even in brightly lit rooms, removing the need to draw blinds or shades in daylight. The Colour Light Output specification measures red, green and blue, each on a nine point grid, applying the same methods used in the ISO 21118 standard for measuring White Light Output.



Brightness (or White Light Output) measures the total amount of white light projected in lumens on a nine point grid. It does not measure colour.



Colour Light Output uses three sets of a nine point grid to measure the primary colours – red, green and blue.



\*Compared to leading 1-chip DLP business and education projectors based on NPD data, July 2011 through June 2012. Colour brightness (Colour Light Output) measured in accordance with IDMS 15.4. Colour brightness will vary depending on usage conditions. For more information please visit [www.epson.eu/CLO](http://www.epson.eu/CLO)

Not all products are available in all countries. For more information please contact your local Epson office or visit [www.epson-europe.com](http://www.epson-europe.com)

Austria 01 253 49 78 333 Belgium +32 (0)2 792 04 47 Czech 800/142 052 Denmark 44 50 85 85 Finland 0201 552 091  
 France 09 74 75 04 04 (Cost of local call, operator charges may apply) Germany +49 (0) 2159/92 79 500 Greece 210-8099499  
 Hungary 06800 147 83 Ireland 01 436 7742 Italy 02-660321 10 (0,12 €/min) Luxembourg +352 27860692  
 Middle East +9714 8872172 Netherlands +31 (0)20 708 5099 Norway +47 67 11 37 00 Poland 0-0-800 4911299 (0,16 zł/min)  
 Portugal 707 222 111 Russia (095) 777-03-55 Slovakia 0850 111 429 South Africa (+2711) 465-9621 Spain 93 582 15 00  
 Sweden 0771-400135 (Mobilsamtal – 0,99 kr/min, Lokala samtal – 0,30 kr/min, Utlandssamtal – 0,89 kr/min) Switzerland 022 592 7923  
 Turkey (0212) 3360303 United Kingdom 0871 222 6702

Trademarks and registered trademarks are the property of Seiko Epson Corporation or their respective owners. Product information is subject to change without prior notice.

**EPSON**<sup>®</sup>

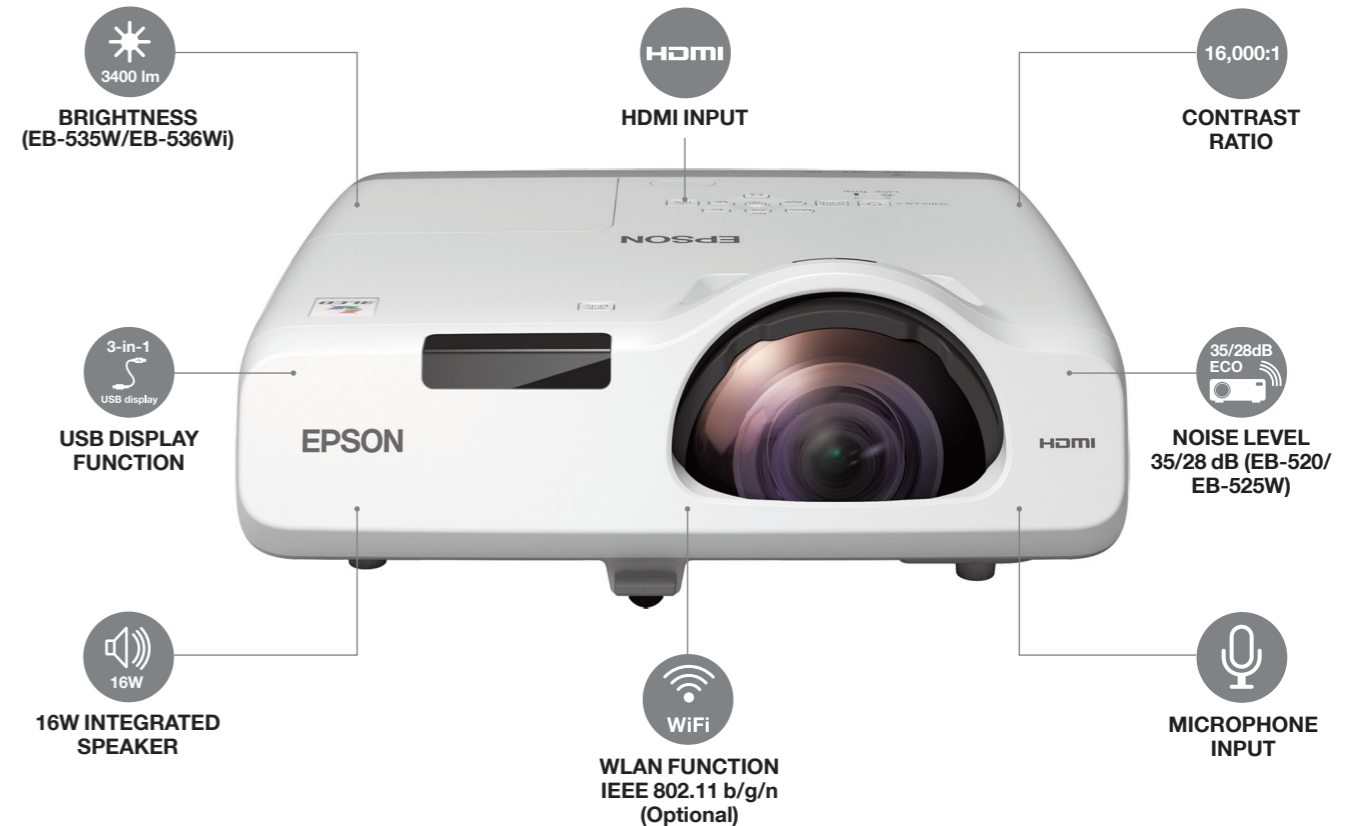
## Epson EB-500 Series

# VERSATILE SHORT THROW PROJECTOR WITH A HIGH-QUALITY IMAGE AND A RANGE OF EASY-TO-USE FEATURES FOR EDUCATION AND BUSINESS ENVIRONMENTS

## Epson EB-520, EB-525W, EB-530, EB-535W, EB-536Wi

With a new short throw lens, the Epson EB-500 Series, delivers improved focus and sharper images. Combined with the short throw distance, this results in reduced shadow and glare as well as freeing up valuable classroom or meeting room space. Higher lumens across the range ensures brighter images to make the most of the stunning 3LCD technology.

- Equally high White and Colour Light Output of up to 3,400 lumens
- High contrast ratio of 16,000:1 for the sharpest, clearest detail
- Short throw ratio reduces shadow and glare
- HD ready for the most stunning, visual presentations\*<sup>1</sup>
- Horizontal and vertical keystone correction for greater installation flexibility
- 66% longer lamp life of up to 10,000 hours (eco mode)
- Powerful built-in 16w speaker and microphone input
- Interactive model offers driverless installation, auto-calibration\*<sup>2</sup> and dual pen capability\*<sup>3</sup>



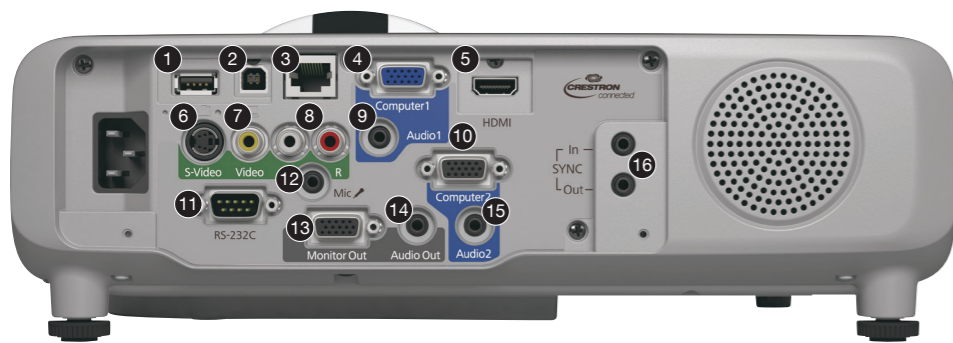
**No.1**  
SINCE 2001  
EPSON  
WORLD LEADER  
IN PROJECTORS\*<sup>4</sup>

**EPSON**<sup>®</sup>  
EXCEED YOUR VISION

# EB-500 series

Model	Technology	Resolution / Aspect ratio	Contrast ratio	White / Colour Light Output (lumens) (standard / economy)	Lamp type	Lamp life (hours) (standard / economy)	Image size (inches)	Throw ratio	Zoom ratio	Keystone correction (horizontal / vertical)	Speakers	Noise level (standard / economy) (dB)	Power consumption (standard/economy/stand-by)	Weight (kg)	Dimensions W x H x D (mm)	Connectors							Supplied accessories	Certificates	Projector warranty <sup>5</sup>	Lamp warranty <sup>5</sup>	Box size L x W x H (mm) Gross weight (kg)		
																Connectors (Input)				Connectors (Output)									
																Digital	Computer	Network	Video	Audio	USB	Control	Computer	Audio					
EB-536Wi	3LCD	WXGA 1280 x 800 16:10	16,000:1	3,400 / 1,900	215W	5,000 / 10,000	53-116	0.48:1	1.0-1.35 Digital Zoom	±5° / ±7°	16W	37 / 29	298W / 221W / 0.28W	3.9	344 x 94 x 315							RS-232C D-sub 9pin x1, Sync in and out			Power Cable, Remote Control, AA batteries x4, Quick Start Guide, Warranty Card, Easy MP software CD, USB cable, Interactive pen ELPPN04A, Easy Interactive Tools software		2 years		504 x 386 x 209, 6.25
EB-535W	3LCD	WXGA 1280 x 800 16:10	16,000:1	3,400 / 1,900	215W	5,000 / 10,000	53-116	0.48:1	1.0-1.35 Digital Zoom	±15° / ±15°	16W	37 / 29	298W / 221W / 0.28W	3.7	344 x 94 x 315	HDMI x1	Dsub15 x2	LAN (RJ45), Optional WiFi	Composite Video: RCA x1, S-Video: Mini DIN x1, Component Video: D-sub 15pin x2, RGB Video: D-sub 15pin x2	Audio In: Stereo mini jack x2, RCA pair x1, Microphone x1	USB Type A x1 (for USB Memory, document camera), USB Type B x1 (for USB Display, mouse, keyboard, interactive)		Dsub 15pin x1	Audio Out: Stereo mini jack x1	CE Marking, 2009/125/EC, 2006/95/EC, 2004/108/EC	2 years	1 year or 1,000 hours	504 x 386 x 209, 6.25	
EB-530	3LCD	XGA 1024 x 768 4:3	16,000:1	3,200 / 1,800	215W	5,000 / 10,000	50-108	0.55:1	1.0-1.35 Digital Zoom	±15° / ±15°	16W	37 / 29	298W / 221W / 0.28W	3.7	344 x 94 x 315							RS-232C D-sub 9pin x1			Power Cable, Remote Control, AA batteries x 2, Quick Start Guide, Warranty Card, Easy MP software CD, Computer cable		2 years		504 x 386 x 209, 5.6
EB-525W	3LCD	WXGA 1280 x 800 16:10	16,000:1	2,800 / 1,700	200W	5,000 / 10,000	53-116	0.48:1	1.0-1.35 Digital Zoom	±15° / ±15°	16W	35 / 28	278W / 219W / 0.28W	3.9	344 x 94 x 315												2 years		504 x 386 x 209, 5.6
EB-520	3LCD	XGA 1024 x 768 4:3	16,000:1	2,700 / 1,600	200W	5,000 / 10,000	50-108	0.55:1	1.0-1.35 Digital Zoom	±15° / ±15°	16W	35 / 28	278W / 219W / 0.28W	3.7	344 x 94 x 315												2 years		504 x 386 x 209, 5.6

## Connectivity



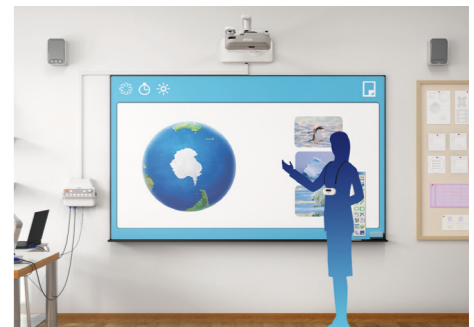
## Key

- 1 USB 2.0 Type A
- 2 USB 2.0 Type B
- 3 LAN
- 4 VGA in 1
- 5 HDMI
- 6 S-Video (Mini - DIN)
- 7 Composite video
- 8 Audio L-R
- 9 Audio 1
- 10 VGA in 2
- 11 RS-232C
- 12 Mic mini jack
- 13 Monitor out
- 14 Audio out
- 15 Audio 2
- 16 Sync in and out\*2

## Brighter, sharper more engaging presentations

The EB-500 Series of short throw projectors is our brightest yet, with up to 3,400 lumens delivering equally high White and Colour Light Output to create vivid, real-life and memorable presentations. With some models HD ready and all able to seamlessly connect with the latest digital devices, the intuitive, easy-to-use technology will help anyone deliver a master class in keeping your audience interested and engaged.

By projecting large images in a shorter distance, the EB-500 Series not only minimises presenter shadow but also reduces glare and ensures greater flexibility in where the projector can be located thanks to horizontal and vertical keystone correction.



EB-520 / 525W / 530 / 535W

EB-536Wi

\*1 EB-536Wi, EB-535W and EB-525W models only

\*2 EB-536Wi model only

\*3 EB-536Wi model only - second pen supplied as optional accessory

\*4 Source: Futuresource Consulting Limited, www.futuresource-consulting.com

\*5 The warranty can be extended up to 5 years for the projectors and up to 5 years for the lamps or 3,000 hours (whichever comes first) with the Epson CoverPlus Packages. Warranty offers are not available for all countries. Please contact your local Epson representative