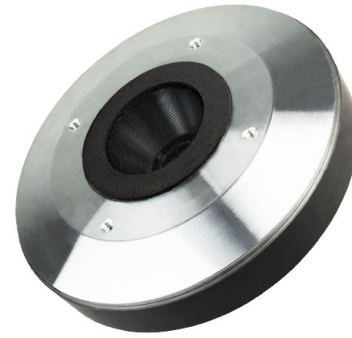


HF201

2" - 100 W - 108 dB - 8 Ohm



NOMINAL SPECIFICATIONS

Throat Diameter	50.8 mm (2 in)
Overall Diameter	170 mm (6.69 in)
90° Mounting Holes Diameter (4xM6)	102 mm (4.02 in)
Depth	66 mm (2.60 in)
Net Weight	4.6 Kg (10.2 lb)
Shipping Box (Single carton box)	195 x 195 x 141 mm (7.7 x 7.7 x 5.6 in)
Shipping Weight	4.8 Kg (10.6 lb)

PART NUMBER

Push Terminals - 8 Ohm Version	00744169
--------------------------------	----------

NOTES:

Driver mounted on a 2" 90° x 40° Horn

(1) 2 Hours Test According to AES 2-1984 Rev. 2003

(2) Maximum power is defined as 3dB greater than nominal power.

(3) 12 dB/oct or higher slope high-pass filter

(4) Averaged within the frequency range

(5) The phase plug is recessed from the driver's exit which is at the end of a conical adaptation horn.

TECHNICAL PARAMETERS

Nominal Impedance	8 Ohm
Minimum Impedance	7.2 Ohm
AES Power above 0.9 kHz (1)	100 W
AES Power above 0.65 kHz	50 W
Maximum Power above 0.9 kHz (2)	200 W
Maximum Power above 0.65 kHz	100 W
Minimum Crossover Frequency (3)	0.9 kHz
Sensitivity (1W/1m) (4)	108 dB
Frequency Range	0.5÷18 kHz
Voice Coil Diameter	74 mm (2.91 in)
Winding Material	Al
Former Material	Kapton
Diaphragm Material	Titanium
Diaphragm Shape	Dome
Winding Depth	2.35 mm (0.09 in)
Magnetic Gap Depth	3.2 mm (0.13 in)
Flux Density	1.7 T
Magnet	Ferrite Ring
Re	5.6 Ohm
Phase Plug Design	Annular
Exit Angle (5)	36° Conical
NET Air Volume filled by HF Driver	1.05 dm ³ (0.037 ft ³)

