

NOVA 2.0
Improvements and brand new features

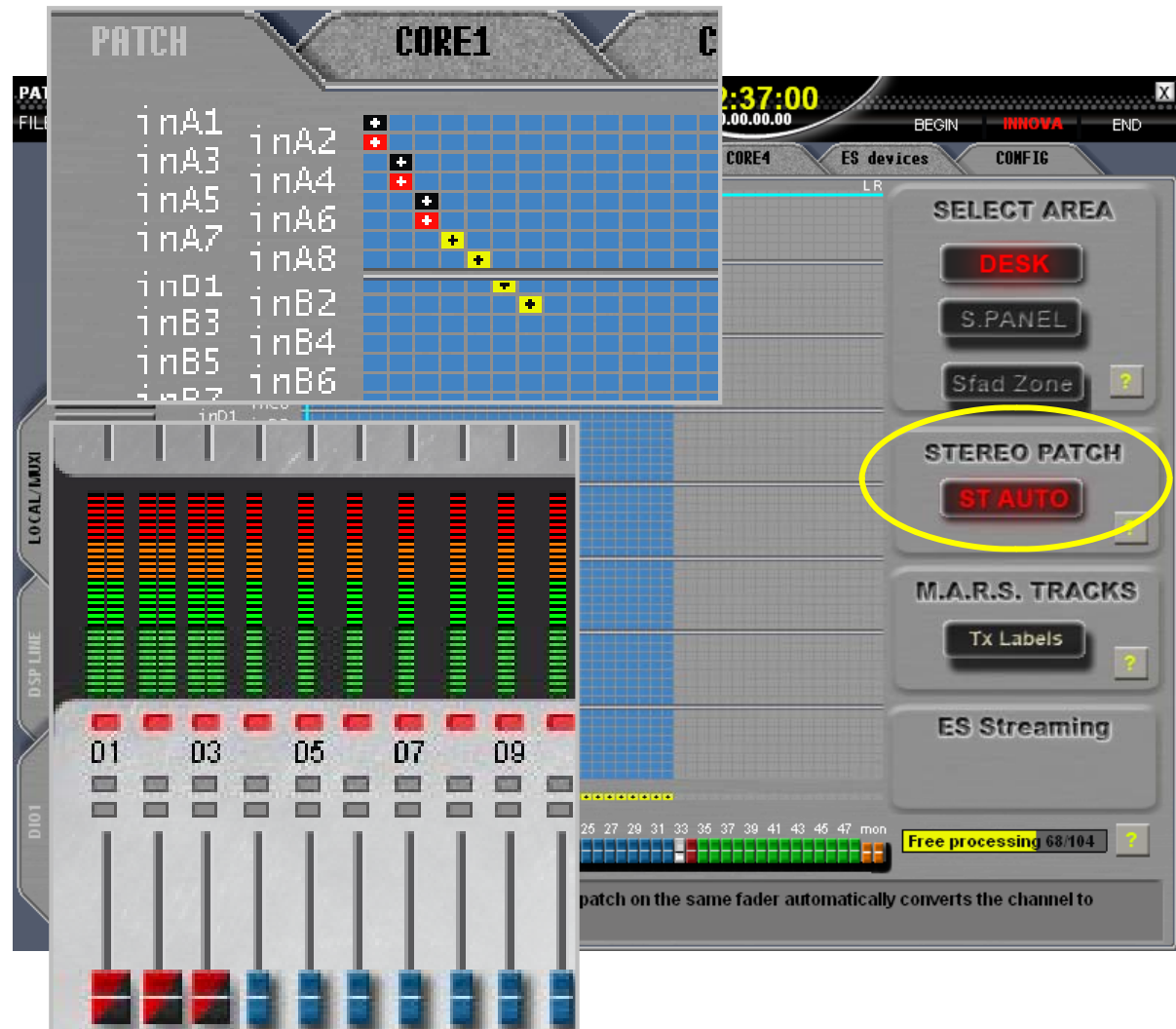
September 2010



STEREO MANAGEMENT

„on the fly“

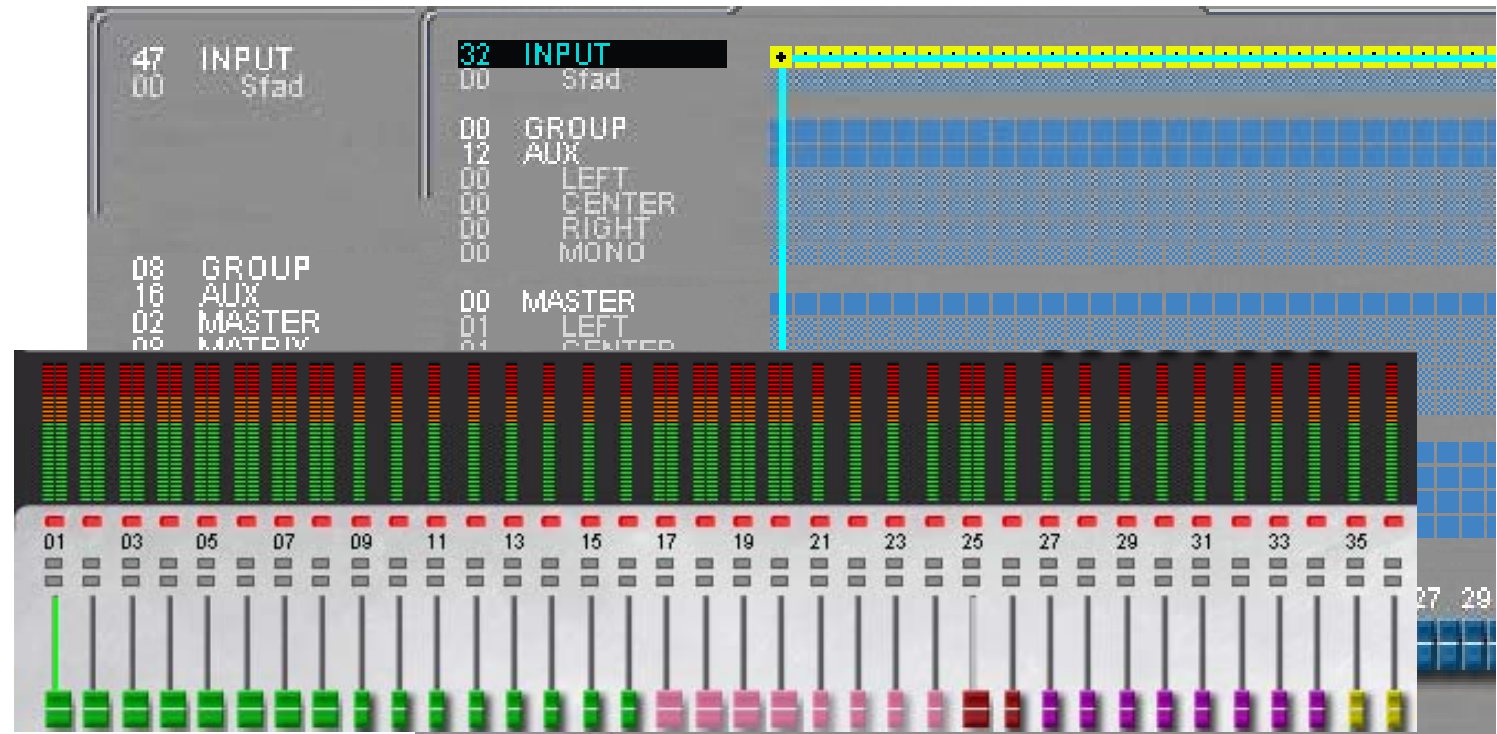
- Input channels
- ST AUTO allows automatic creation of stereo channels
- Second patch to the same fader updates the channel to stereo
- Black = left channel
Red = right channel
- Stereo VU meter and colored stereo fader on main mix screen
- Balance and Width control
- True stereo EQ and dynamics processing



STEREO MANAGEMENT

„on the fly“

- 48 Mix Busses
- Aux, Group, Master, Matrix
- Assigned in the Personal Console Builder
- Mono
- Stereo LR
- Stereo LRC
- Stereo VU meter and stereo fader on main mix screen
- Independent LRC adjustments



8 LR Stereo Aux	+ 8 Mono Aux
4 LR Stereo Groups	+ 4 Mono Groups
1 LRC Master	+ 1 Mono Master
8 Mono Matrix	

PATCH OUTPUT 10:21:41 00.00.00.00

FILE PAGE GRID BANK UTIL VIEW M.A.R.S BEGIN INNOVA END

PATCH CORE1 CORE2 CORE3 CORE4 ES devices CONFIG

SELECT AREA

DESK

S.PANEL ?

STEREO PATCH

	L	R	C
1	ouG1	ouG2	ouG3
2	Lo01	Lo02	Lo03
3	L	R	C
4			
5			
6			

M.A.R.S. TRACKS

Tx Labels ?

ES Streaming

UP DOWN

01 - L 02 - R
03 - C 04 - SL
05 - SR 06 - RL
07 - RR 08 - Eo08
09 - Eo09 10 - Eo10
11 - Eo11 12 - Eo12
13 - Eo13 14 - Eo14
15 - Eo15 16 - Eo16

53 - Eo53 54 - Eo54
55 - Eo55 56 - Eo56
57 - Eo57 58 - Eo58
59 - Eo59 60 - Eo60
61 - Eo61 62 - Eo62
63 - Eo63 64 - Eo64

SMST

LAYER A LAYER B LAYER C LAYER D

HELP Press [SPACE] to patch/unpatch the ethersound channel 01 to the left bus of fader C02. Click in the grid to impose the es channel 01 to another bus.

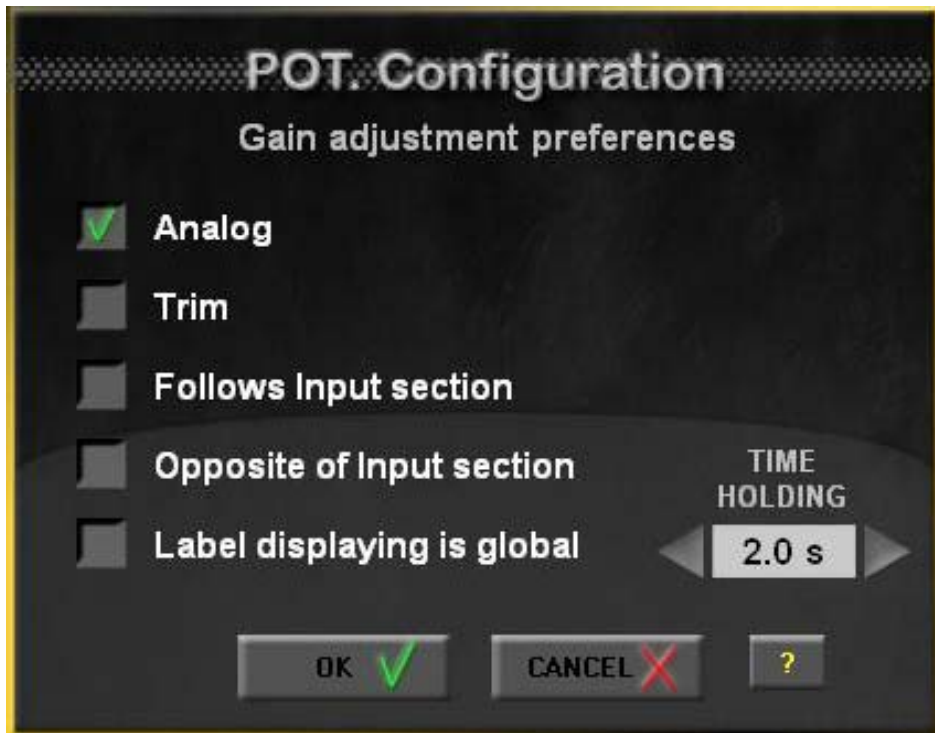
Output Adj.
Output Gain
+0.0dB MUTE
0 -12 -24 -36 -48

■ This list shows the output label for each left, right and centre assignment. In our example we have patched the selected fader 3 times.

NOVA 2.0

CHANNEL STRIP ROTARY

- 3 functions
- GAIN – analogue Gain or digital Trim



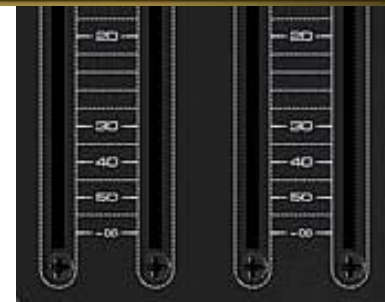
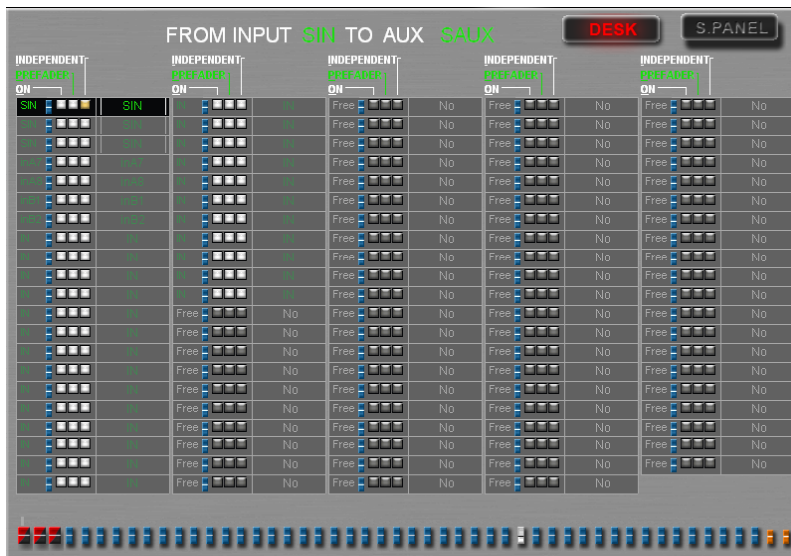
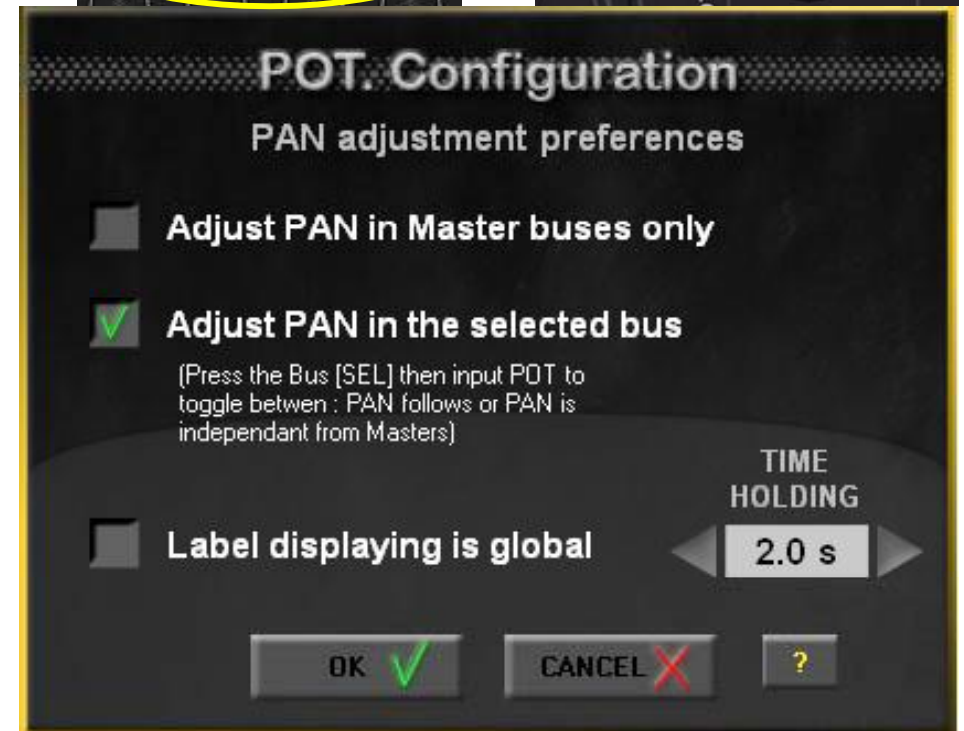
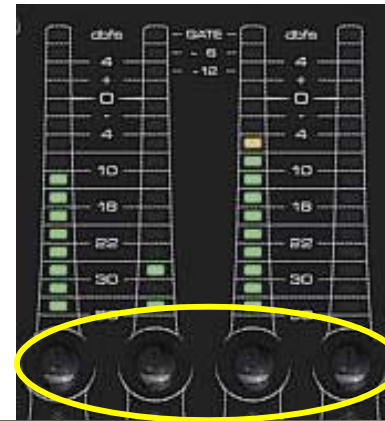
innovason
PUSH THE LIMITS.



NOVA 2.0

CHANNEL STRIP ROTARY

- PAN – adjusts left/right pan on mono channels or balance/width on stereo channels.
- It can also switch between dependent panning (to all stereo busses) and independent panning (to the selected bus) making it easy to setup independent pan for Aux sends.



NOVA 2.0

CHANNEL STRIP ROTARY

- New: USER
- Can be assigned to any variable parameter, e.g. Aux Send Level, EQ Gain, Compressor Threshold, etc.
- Channel by channel or global
- Assignment stored in pages, copied with Over Ram
- An INFO pop-up appears showing the name of the parameter you are controlling
- Value is shown on the fader strip label

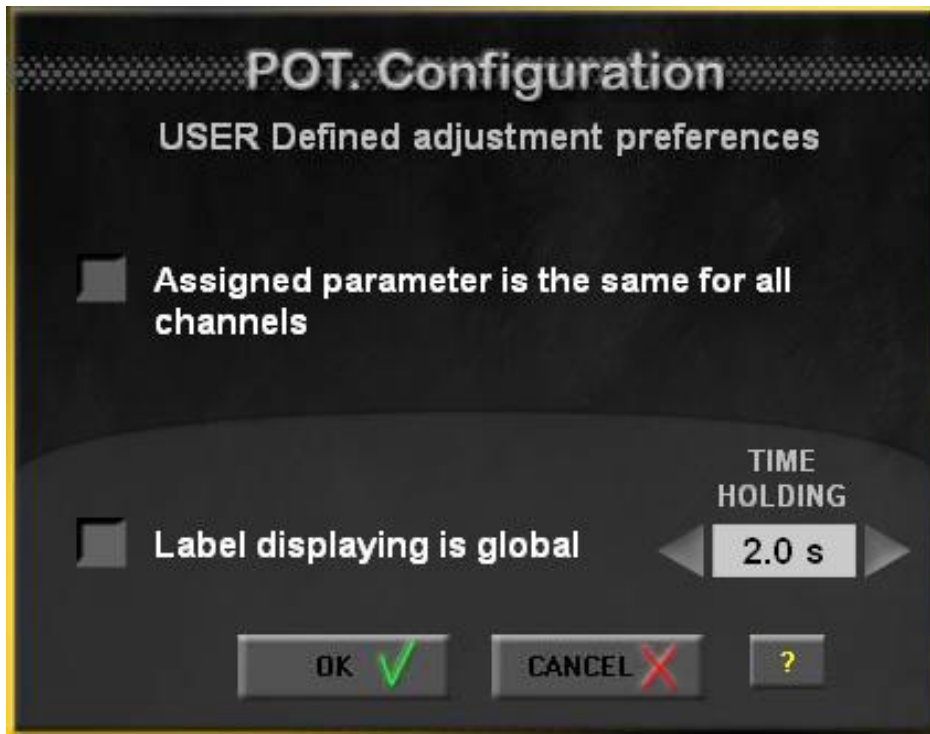
innovason
PUSH THE LIMITS.



NOVA 2.0

CHANNEL STRIP ROTARY

- USER defined adjustment preferences



- ... any questions?



innovason
PUSH THE LIMITS.



USER DEFINED PANEL

- 6 VU meters, 4 rotary controls, 4 switches.
- VU meters may be assigned to any source or mix bus (Aux, Group, Matrix, Master or Monitor).
- Rotary controls and switches may be assigned from a wide range of functions:
 - Shortcuts to favourite menus
 - Selecting and sending MIDI program changes
 - Switch any function to any group of channels (e.g. Mute Group)
 - Access to functions such as tap tempo
- User Defined Panel configurations can be saved and loaded independently of the current file and page. This allows you to create different configurations for patching, FOH mixing, mixing monitors, and so on.



User Keys Defined Assignment

1 2 3 4 5 6

NONE NONE NONE NONE NONE NONE

INPUTS ▶ NONE
MIX ▶ MUXI ▶ DI8 : inE1
LINE ▶ DI8 : inE2
ES ▶ DI8 : inE3
DI8 : inE4
DI8 : inE5
DI8 : inE6
DI8 : inE7
DI8 : inE8
SI8 : inF1
SI8 : inF2
SI8 : inF3
SI8 : inF4
SI8 : inF5
SI8 : inF6
SI8 : inF7
SI8 : inF8
FM8 : inH1
FM8 : inH2
FM8 : inH3
FM8 : inH4

KEYS CONFIG

SAVE
LOAD
DELETE
CLEAR

REM Geq
Remote Geq Editor
TXmd DWN
Midi TX ON Patch ES Dn

OK ✓ UNDO ✗ ?

User Keys Defined Assignment

1 2 3 4 5 6

NONE NONE NONE NONE NONE NONE

INPUTS ▶
MIX ▶
IMPO

GROUP ▶
AUX ▶
MASTER ▶
MATRIX ▶
MONITOR ▶

S AUX ▶
Drum ▶
S AUX ▶
S AUX ▶

o02
o1E4
o1F1
o1F2
o1F3
o1F4

KEYS CONFIG

SAVE
LOAD
DELETE
CLEAR

USR4 USR5
Assign Assign

USR2 USR3
Assign Assign

USR6 USR7
Assign Assign

HELP

OK ✓ UNDO ✗ ?

User Keys Defined Assignment

1 2 3 4 5 6

AUX:o02 AUX:o1E4 MTX:o13 MTX:o1F6 RL:Li01 RL:Li02

USR0 **USR1** **KEYS CONFIG** **USR4** **USR5**

Assign Assign SAVE Assign Assign

None
Patch +/-
Line shif
Row shif
Auto Adjust
MIDI : MPC
MIDI : CHAN
Xfade : TIME
LiteLight
Desk LED
TEMPO

USR3

Assign LOAD **USR6** **USR7**

Assign DELETE Assign Assign

CLEAR

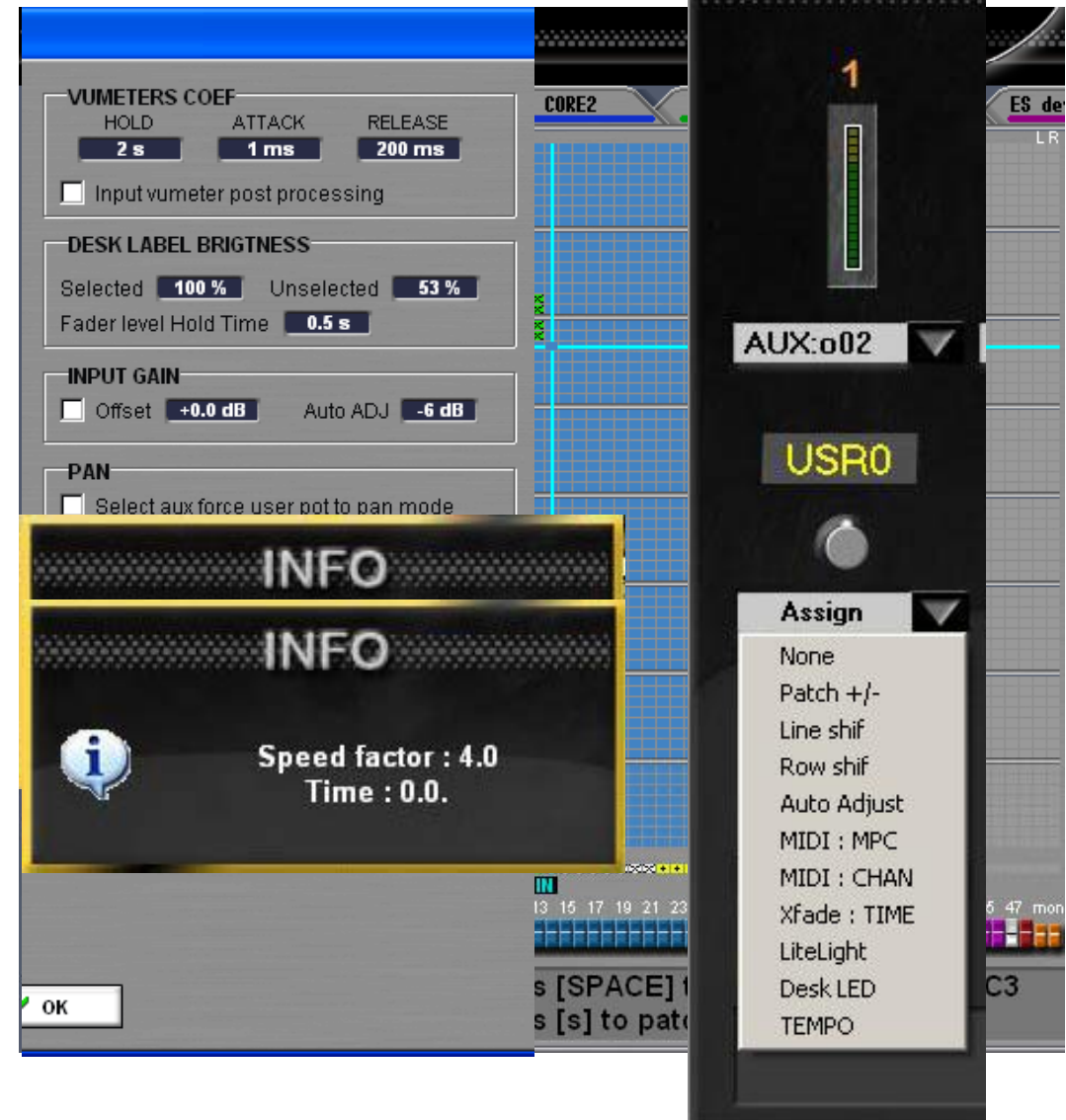
OK ✓ UNDO ✗ ?

NOVA 2.0

USER DEFINED PANEL

Rotary Knob Assigns

- Patch +/- input sources from the Main Mix display
- Line/Row Shift moves the crosspoint on any patch grid
- Auto Adjust sets and turns on/off the global gain for the selected channel
- Midi Programm Change / Midi Channel
- Xfade time similar to the Xfade fader
- Littlite dimmer
- Desk LED: 3 individual dimmer for VU meters, switch LEDs, fader ID colors
- Tempo for all internal multitap delays set to autofit mode



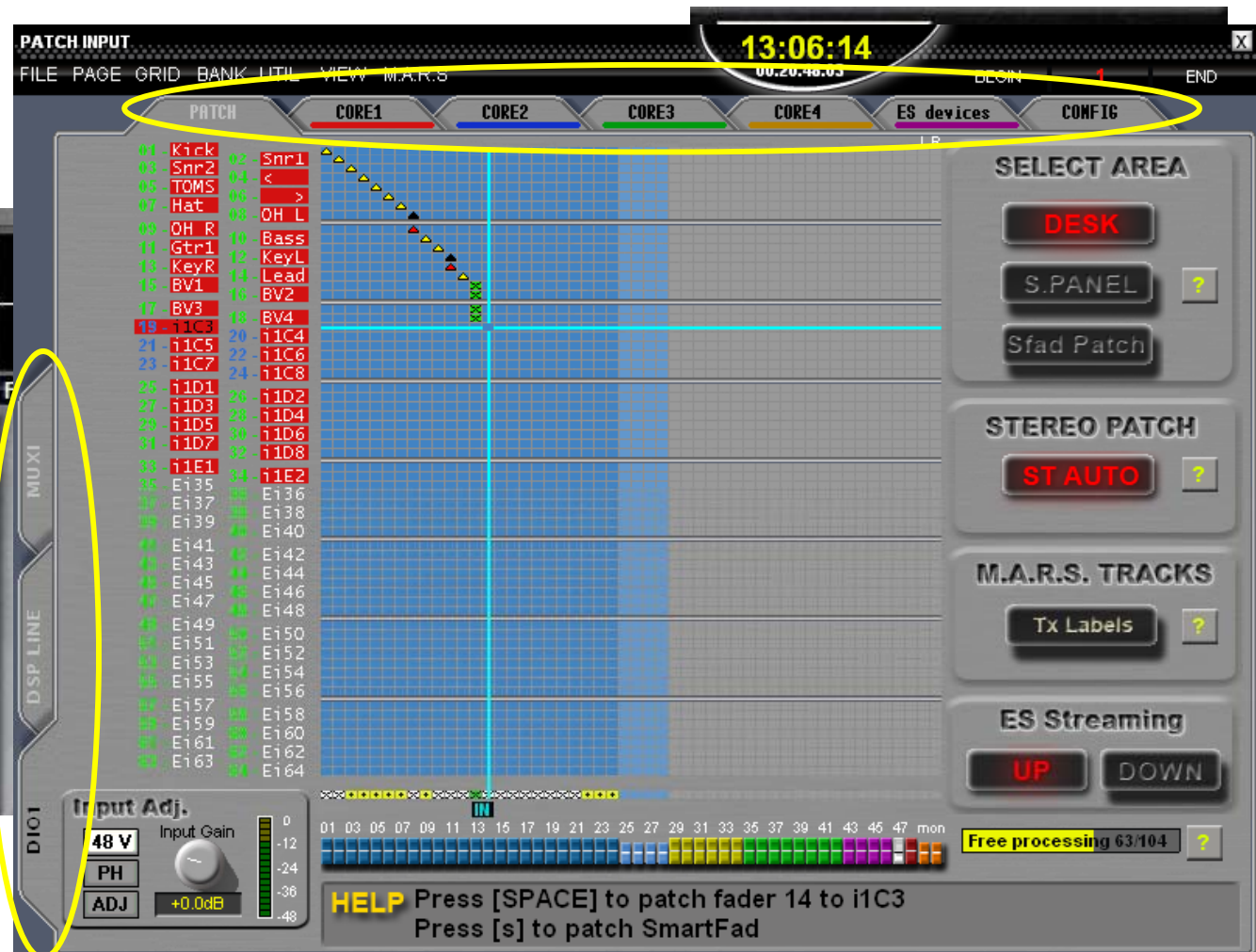
USER DEFINED PANEL

Switch Assigns

- Tap Tempo calculates and sends a tempo to all internal multitap delays set to autofit mode
- Patch activates a crosspoint within any grid, same as pressing [Space]
- Patch ES Up/Downstream, same as [U] or [D] on the keyboard
- Edit Label for the selected input, output or channel, same as [F3]
- Shortcuts to open the General Preferences, Monitoring or Personal Console Builder window
- Shortcuts to Save / Open Bank of the processing library
- Shortcut for inserting a new page, same as [F2]



USER DEFINED PANEL Switch Assigns



- Top / Left Tab cycles between tabs within any display
- Shortcuts for MTC On, MIDI RX On and MIDI TX On



NOVA 2.0

USER DEFINED PANEL

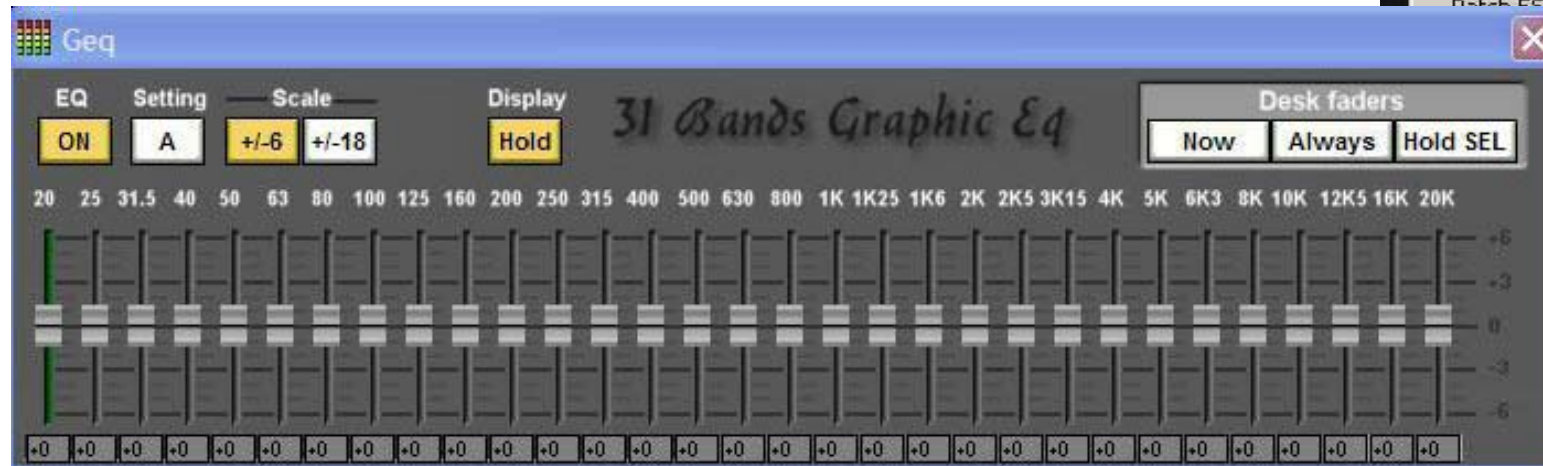
Switch Assigns

- Shortcuts to enable Virtual Soundcheck (VSC) or Broadway mode to replay audio from M.A.R.S.
- Remote switches any on/off button from any group of channels, e.g. create a mute group or switch all inserts
- Flip the Smart Panel to the Desk and vice versa!



USER DEFINED PANEL Switch Assigns

- ... any questions?



- GEQ Editor opens the GEQ window and maps the frequencies onto the console faders
- Shortcuts for OK and Cancel, same as the buttons to the right of the trackball
- Next / Previous Page, same as the buttons on the FILES/AUTO panel



PERSONAL MIXES

- A “Personal Mix” saves the send levels, panning and routing for a particular Aux.
- This allows you to save a different monitor mix for each musician playing at the show.
- Personal Mixes are saved in the current show file.
- You can load a Personal Mix to any Aux; the Aux mix is updated for all Pages.
- Library for aux mixes.

NOVA 2.0.0.16 OpsGuide 14:46:21 00.44.35.06

FILE PAGE GRID BANK UTIL VIEW M.A.R.S BEGIN END

PEAK VU

0 -6 -12 -18 -24 -30 -36 -42 -48

LEFT

0151

OUTPUT ENVORE 1
DIOCHL
UM-8 PROCESSED

48V **ADJ**

STEREO EDIT

COMPRESSOR GC FLAT P.EQ ON EQ1 G.EQ ON Edit Disp P+G

Attack 10 ms Threshold 0 dB

Release 100 ms Gain 0 dB

Ratio 1.0:1

1 oct 1 oct 1 oct 1 oct

54 Hz 101 Hz 406 Hz 707 Hz

0 dB 0 dB 0 dB 0 dB

MONITOR 1 -14.8 dB

PFL In +0.0 dB

APL Out +0.0 dB

St SAUX -0.8 dB

BALANCE

MIDI in out TC start crossfade

DESK SMART PANEL

DESK LOCAL RACK STAGE BOX CORE 1 CORE 2 CORE 3 CORE 4 MARS

01 03 05 07 09 11 13 15 17 19 21 23 25 27 29 31 33 35 37 39 41 43 45 47 49

NOVA 2.0.0.16 OpsGuide 15:07:15 00.44.35.06

FILE PAGE GRID BANK UTIL VIEW M.A.R.S BEGIN 1 END

PEAK VU

0 -6 -12 -18 -24 -30 -36 -42 -48

LEFT

DELAY 1365ms

0 smp

0.00 ms

0.000 m

LOWCUT

0 Hz

NO INSERT

Gain Trim

+13.0dB

48V ADJ

Add new mix

Bill

Dave

John

Ins Post

Ins Pre

Output

STEREO

EDIT

COMPRESSOR GC FLAT P.EQ ON EQ1 G.EQ ON Edit Disp P+G

Attack 10 ms

Threshold 0 dB

1 oct

1 oct

1 oct

1 oct

Release 100 ms

Gain 0 dB

Ratio 1.0:1

MONITOR 1

-14.8 dB

PFL In

+0.0 dB

APL Out

+0.0 dB

St SAUX

-0.8 dB

BALANCE

MIDI

in out

TC start

crossfade

DESK SMART PANEL DESK LOCAL RACK

CORE 4 MARS

01 03 05 07 09 11 13 15 17 19 21 23 25 27 29 31 33 35 37 39 41 43 45 47 49

Personal Mix

Please enter the current personal mix's name

Bob

OK ✓ CANCEL ✗

The image shows a screenshot of a digital audio workstation (DAW) interface, specifically the Nova 2.0.0.16 software. The interface is dark-themed and features a central mixer section with various controls for a compressor and equalizer. A dialog box titled "Personal Mix" is overlaid on the center, prompting the user to enter the name of the current personal mix. The name "Bob" is entered in the text field. The background shows a rack of channels with faders and knobs, and a top bar with system information like time and date.

NOVA 2.0.0.16 OpsGuide 15:11:26 00.44.35.06

FILE PAGE GRID BANK UTIL VIEW M.A.R.S BEGIN END

PEAK VU

0 -6 -12 -18 -24 -30 -36 -42 -48

LEFT

DELAY 1365ms

0 smp

0.00 ms

0.000 m

LOWCUT

0 Hz

NO INSERT

Gain Trim

+13.0dB

48V ADJ

Add new mix

Bill

Bob

Dave

STEREO

EDIT

Ratio 1.0:1

COMPRESSOR GC FLAT P.EQ ON EQ1 G.EQ ON Edit Disp P+G

Attack 10 ms Threshold 0 dB

Release 100 ms Gain 0 dB

1 oct 1 oct 1 oct 1 oct

MONITOR 1 -14.8 dB

PFL In +0.0 dB

APL Out +0.0 dB

St SAUX -0.8 dB

BALANCE

MIDI in out TC start crossfade

DESK SMART PANEL DESK LOCAL RACK

CORE 4 MARS

01 03 05 07 09 11 13 15 17 19 21 23 25 27 29 31 33 35 37 39 41 43 45 47 49

Personal Mix

Please enter the new personal mix's name

Carl

OK CANCEL





■ ... any questions?

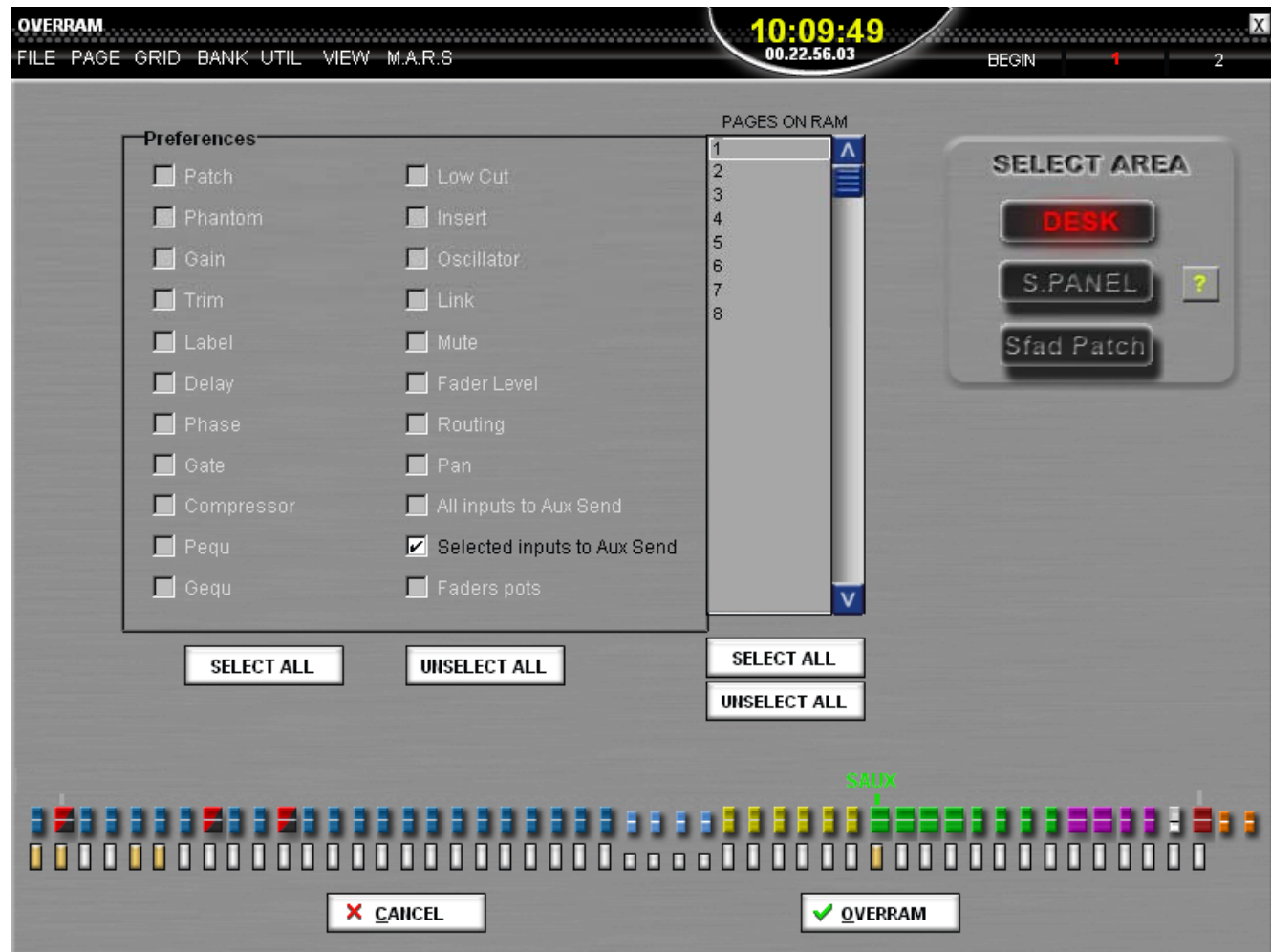
OVERRAM FOR DIRECT IO

- Select a single crosspoint or an area of crosspoints
- Global paste into other pages of the showfile
- Patch and labels
- Input gain, 48V, phase
- Output processing



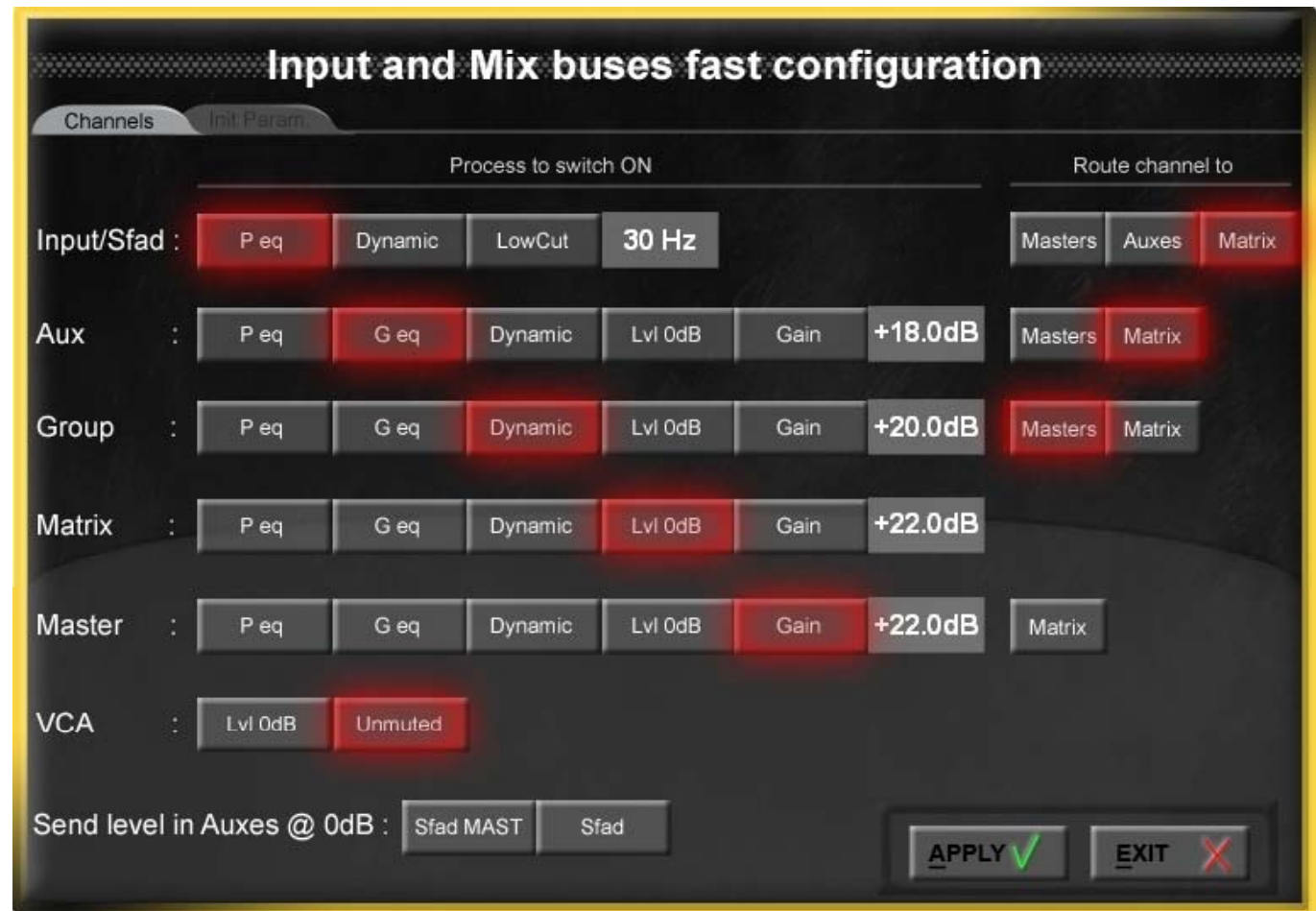
OVERRAM FOR AUX SENDS

- 2 new options for Aux mixes
- All Inputs to Aux Send – allows you to Over Ram all sends to an Aux (or Auxes) in one operation
- Selected Inputs to Aux Send – allows you to Over Ram selected sends to an Aux (or Auxes).
- For example, if you just want to change the level of one instrument to a monitor feed.



FAST CONFIGURATION CHANNELS

- One click set up
- For Input, Aux, Group, Matrix, Master and VCA channels
- All default parameters such as EQ On, Dynamics On, Low Cut, Fader Level 0dB
- Bus routing
- Apply the settings to the current mix or only when new channels are created (exit)



FAST CONFIGURATION VALUES

- Create a default preset with specific values for the compressor and gate
- Make a choice out of 4 different PAN curves
- Apply the settings to the current mix or use it as initial values when new channels are created (exit)

Input and Mix buses fast configuration

Channels Values

COMPRESSOR

10 ms 3 dB

100 ms 6 dB

2.0:1

GATE

10 ms -90 dB

550 ms -95 dB

50 ms

PAN Curve

PAN 1 PAN 2

PAN 3 PAN 4

STANDARD

0dB -3dB -6dB

-96dB

-15 -12 -9 -6 -3 CENTER 3 6 9 12 15

Left Right Center

PAN POT Position

APPLY ✓ EXIT ✗

FAST CONFIGURATION VALUES

- Create a default preset with specific values for the compressor and gate
- Make a choice out of 4 different PAN curves
- Apply the settings to the current mix or use it as initial values when new channels are created (exit)

Input and Mix buses fast configuration

Channels Values

COMPRESSOR

10 ms 3 dB

100 ms 6 dB

2.0:1

GATE

10 ms -90 dB

550 ms -95 dB

50 ms

PAN Curve

PAN 1 PAN 2 PAN 3 PAN 4

SOFT

0dB -3dB -6dB

-96dB

-15 -12 -9 -6 -3 CENTER 3 6 9 12 15

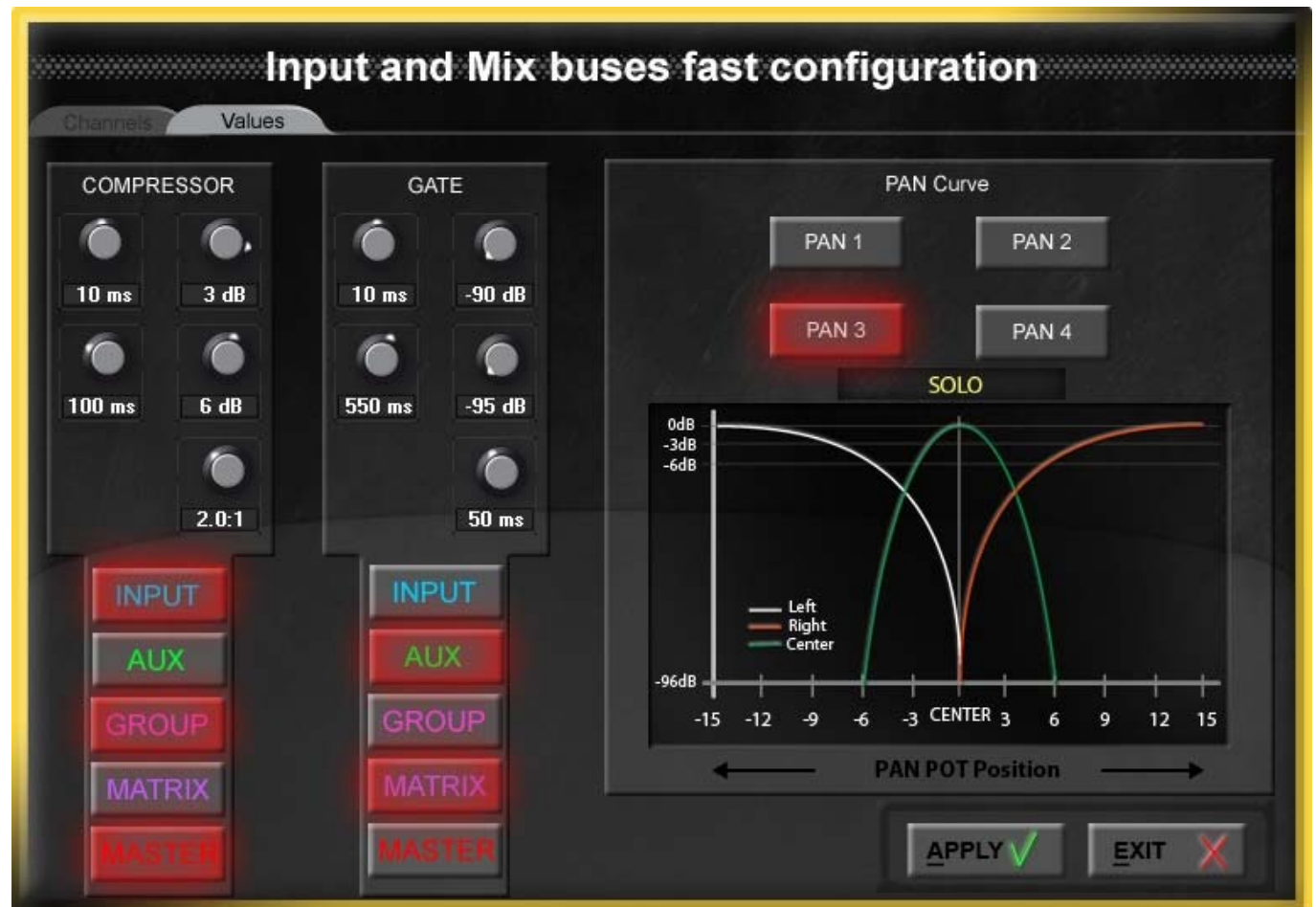
Left Right Center

PAN POT Position

APPLY ✓ EXIT ✗

FAST CONFIGURATION VALUES

- Create a default preset with specific values for the compressor and gate
- Make a choice out of 4 different PAN curves
- Apply the settings to the current mix or use it as initial values when new channels are created (exit)



FAST CONFIGURATION VALUES

- Create a default preset with specific values for the compressor and gate
- Make a choice out of 4 different PAN curves
- Apply the settings to the current mix or use it as initial values when new channels are created (exit)

Input and Mix buses fast configuration

Channels Values

COMPRESSOR

10 ms 3 dB

100 ms 6 dB

2.0:1

GATE

10 ms -90 dB

550 ms -95 dB

50 ms

PAN Curve

PAN 1 PAN 2

PAN 3 PAN 4

Constant Center

0dB -3dB -6dB

-96dB

Left Right Center

-15 -12 -9 -6 -3 CENTER 3 6 9 12 15

PAN POT Position

INPUT AUX GROUP MATRIX MASTER

INPUT AUX GROUP MATRIX MASTER

APPLY ✓ EXIT ✗

SMART LINK

- Fastest way to configure channel linking
- Only when the console is online
- Press down the EDIT LINK rotary control



SMART LINK

- The new Smart Link window opens
- Select all channels you wish to add to the link group
- Select the parameters you wish to link
- ... on the touch screen



SMART LINK

- ... or with the Smart Panel SEL buttons
- Linked channels operate as a ganged link
- Links between channels are relative
- Link groups are saved and recalled from a Page
- Simply edit or display any Link Group
- Channels can be temporarily removed from a link group



FAST LINK

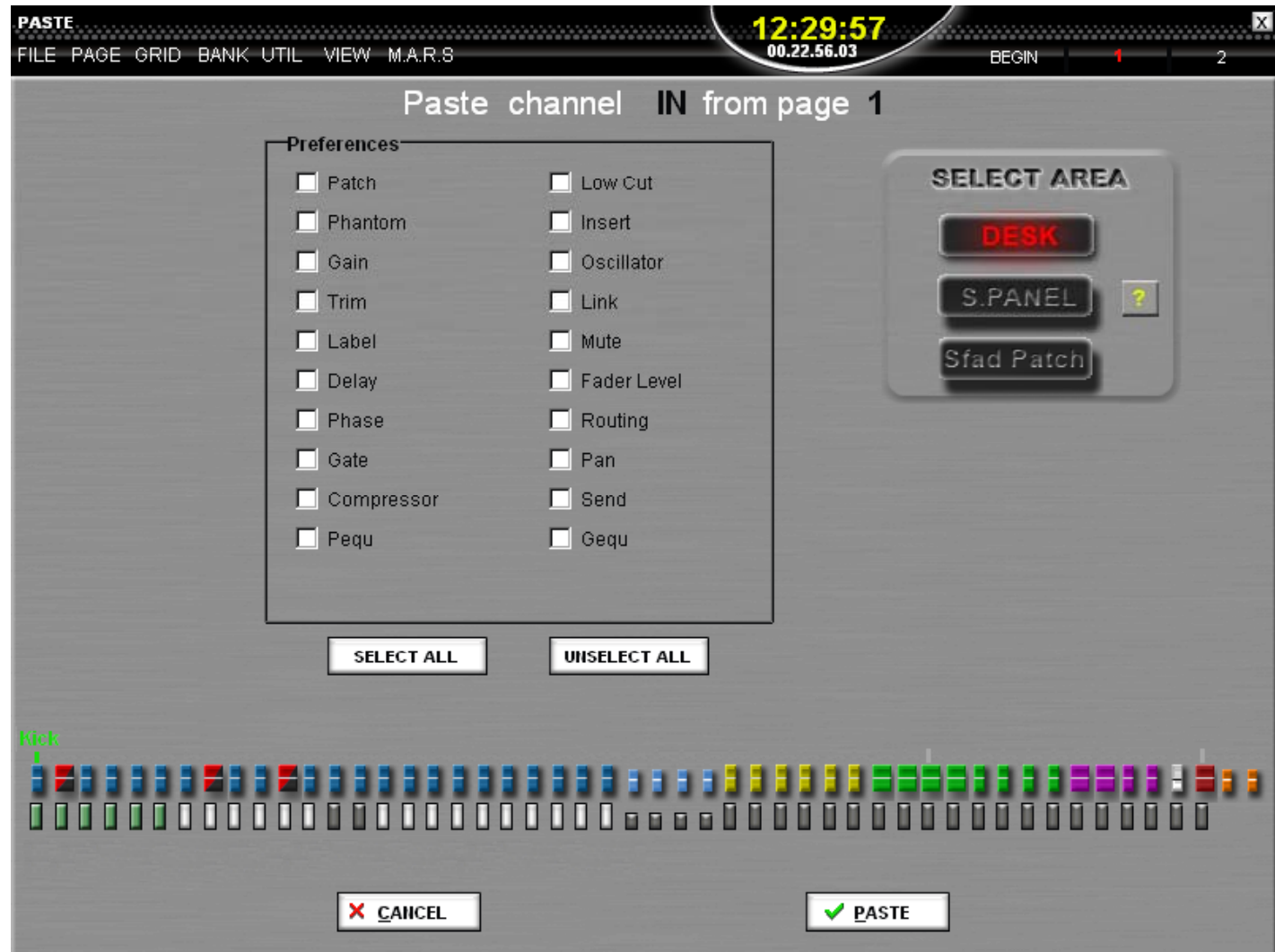
- Create a temporary link group
- Press the LINK rotary control for more than 2 seconds
- Press the channel SEL buttons on the channels you wish to link
- Fast Link links **all** channel parameters
- Update the parameter across several channels on the fly
- Offsets are retained
- Fast Link is faster than Copy/Paste
- Only one Fast Link group
- All other Channel Links are disabled while Fast Link mode is active
- You can not link input and output channels together
- Similar to “gang mode” on other consoles



- ... any questions?

MULTI CHANNEL COPY

- Copy the settings of multiple channels in one operation
- Paste them into a different channel area
- E.g. copy the drum mix to a different area within each Page
- Source and destination channels must be consecutive and of the same type – e.g. all input channels



Solution D network



CAT5 EtherSound link
connection Desk -Stagebox - DMI

64 channels
I/O through EtherSound

- independent gain settings on each desk
- no clipping ...peace of mind
- no noise...highest sound quality
- no interference...purest sound
- easy handling
- integrated generator... quick check the signal flow
- save and recall mic settings through snapshots



Solution D parameters/ microphones

MI-8
P 3 ES

MAC Address: 00-01-02-04-23

CH 1 CH 2 **CH 3** CH 4 CH 5 CH 6 CH 7 CH 8

KM-184D **SnTP**

LowCut: 40 Hz

Pre Att.: 0 dB

Gain: 0 dB

Mo. St. Edit

MUTE

180°

Sign. Test: 1 KHz, Pink, White

Cmp/Lim Edit

PK Lim. 0 dBfs

Mic ID: BLUE 3

Brightness: RED 3

COPY PASTE RESET

POWER POWER



New FX – multiband compressor

GUI Size :
742 x 520

3 to 5 bands Compressor

To set Limiter
limit directly on
meter view

These 2 bands can be marked as DISABLED

Master Output
Meter

To set compressor
threshold directly on
meter view

Possibility to have a single
level of LINK to change
parameters of several bands
in the same time
(in absolute or relative mode)

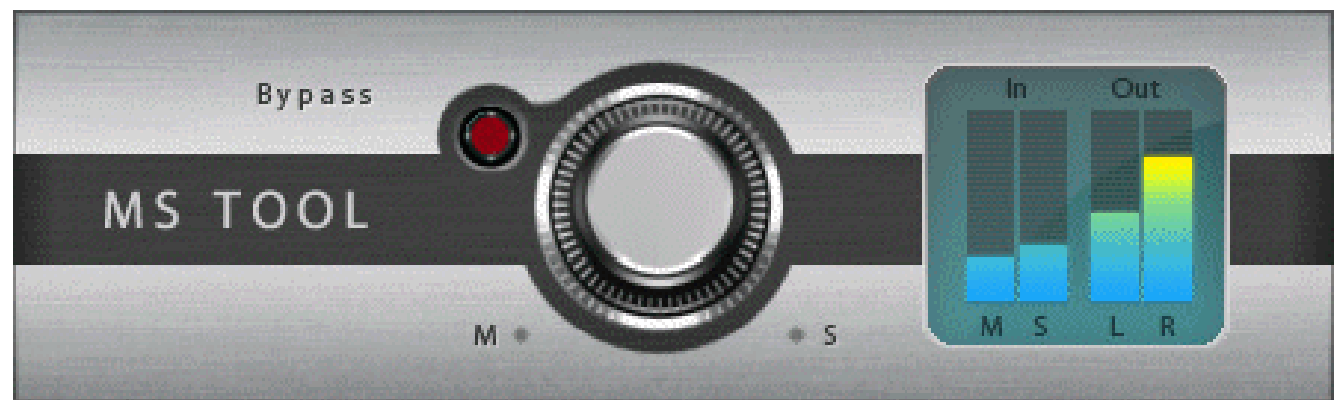
The screenshot displays a multiband compressor interface with five frequency bands. Each band has an 'in' and 'out' meter, a 'Red.' (reduction) meter, and a 'Link' button. The frequency ranges are: Band 1 (20 Hz - 150 Hz), Band 2 (150 Hz - 400 Hz), Band 3 (400 Hz - 1500 Hz), Band 4 (1500 Hz - 5000 Hz), and Band 5 (5000 Hz - 20 kHz). Below the bands, there are controls for 'Gain' (0.0 db), 'Compressor' (Threshold: -30 db, Ratio: 2:1, Attack: 10 ms, Release: 100 ms, Knee: 50%), 'Auto Make Up', 'Stereo Linked', 'Limiter' (Limit: 0.0 db, Distorsion: 5%), 'Link Type' (abs.), 'Bands' (3, 4, 5), 'ByPass', and 'Output Gain' (-12 to 12 dB).

not enough place
for knob.
black Edit box
will be used to
change value by
mouse
like a knob
(move up/down).

Crossover frequency
can be changed by mouse
like a knob (move up/down).

To select
number of band

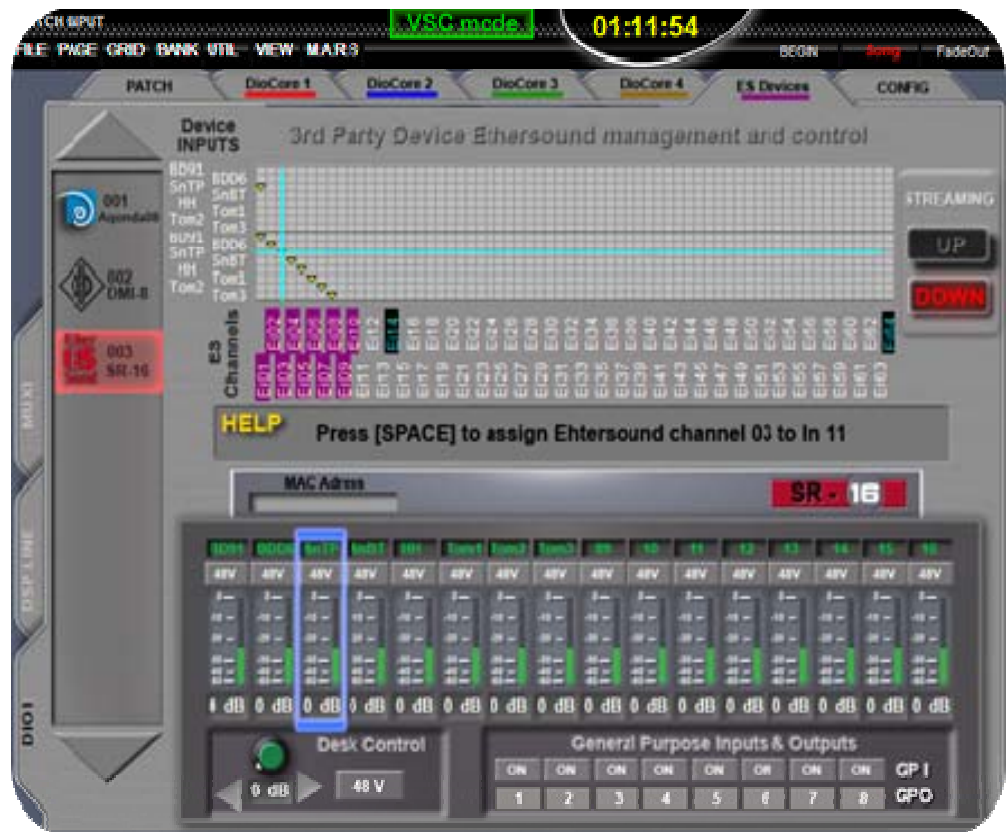
New FX – reverb presets, MS decoder



- 16 balanced analog Mic/ Line Inputs + 16 balanced analog Outputs
- EtherSound device fully controllable by Eclipse and usual EtherSound software control
- Compatible with existing EtherSound setups
- High-end analog preamps and balanced outputs stages
- 8 General Purpose Inputs and 8 General Purpose Outputs



- EtherSound channels assignment from NOVA GUI
- Direct access on Eclipse for preamp gain and PH48V activation
- Device configuration fully saved in NOVA snapshots
- No limitation regarding the number of controlled devices



Detection of Ethersound devices



