

# PROFESSIONAL PEDALBOARDS

diago

**A Diago Pedalboard is the most convenient way to organise, protect and transport your effects pedals.**

It combines a lightweight and roadworthy pedalboard and hardcase with a removable lid, making it ideal for transporting your gear between home, gigs and practices. It makes set-up and tear-down quick and hassle-free, looks sleek and professional and will last a lifetime.

## TOURMAN - PB04

The Diago Tourman is the largest pedalboard on the market, ideal for session players, multi-band musicians and crazy pedal-heads. We've even seen it used for synths, samplers and DJ gear.

## SHOWMAN - PB03

The Showman is ideal for multi-effects units, MIDI controllers, multiple expression pedals, or for 12-16 compact effects.

## GIGMAN - PB02

The Gigman is a compact and portable board, great for guitarists who need just a few basic sounds, or as a second board for stripped-back acoustic sets and rehearsals.

### HARDCASE PROTECTION

1/2" eastern plywood construction, wrapped in a super-durable polyweave skin, protecting your pedals from impact, scratching and moisture.

### HEAVY DUTY HARDWARE

Robust catches, high-quality hinges, steel corner strengtheners and a through-bolted amp style handle.

### QUALITY

Each board is assembled by hand in our factory and undergoes strict quality control for consistently fantastic pedalboards.

## COMMUTER - PB08

There are times when a hardcase pedalboard just isn't practical. You might be travelling on foot, or on the underground/metro, swinging by for a quick practice after work, or playing an acoustic set where you just need a few pedals. The Diago Commuter is an ultra-portable and lightweight alternative to our hardcase pedalboards.

### RUGGED CARRY CASE

8mm of dense EPE foam shell and 600 denier fabric covering provide both impact and scratch resistance.

### ROADWORTHY HARDWARE

Heavy duty zips and robust ABS clips, plus a shoulder strap and carry handle, both made from the same chunky nylon webbing found on mountaineering rucksacks.

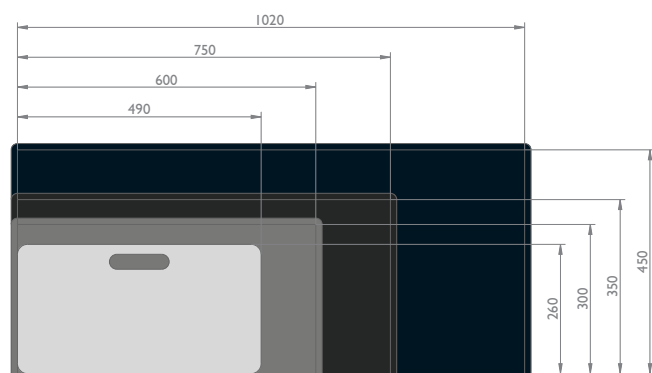
### STOMP WITH CONFIDENCE

Rigid 12mm HDF board with a tough satin black coating. 6 rubber skid pads distribute weight evenly for a solid feel.

Board is removed from bag when in use. (See following page).

FOR MORE DETAILED INFORMATION VISIT: [www.diago.co.uk](http://www.diago.co.uk)

## TECH SPECS & SIZING GUIDE

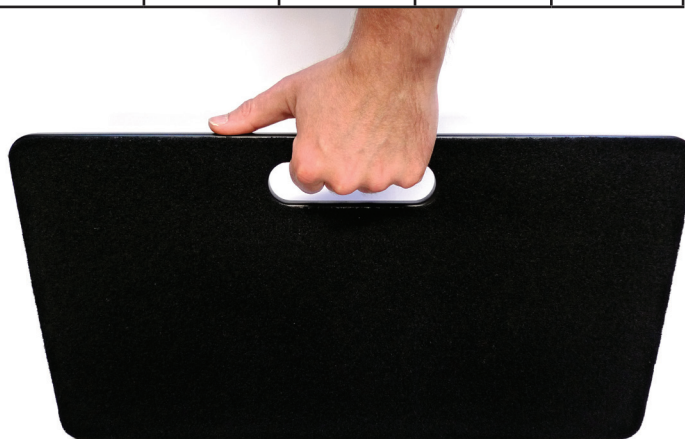


MODEL	COMMUTER PB08	GIGMAN PB02	SHOWMAN PB03	TOURMAN PB04
REF COLOUR				
INTERNAL WIDTH	490mm 19 1/4"	600mm 23 1/2"	750mm 29 1/2"	1020mm 40"
INTERNAL DEPTH	260mm 10 1/4"	300mm 11 3/4"	350mm 13 3/4"	450mm 17 3/4"
INTERNAL HEIGHT	80mm 3 1/8"	85mm 3 1/4"	100mm 4"	100mm 4"
HOW MANY BOSS SIZED PEDALS?	8-10	10-15	15-20	Up to 30!
IDEAL FOR	Guitarists on the go	Boss GT Series	Line 6 Pod XT Live	Crazy Pedal Heads!
WEIGHT	1.8kg (incl. gigbag) 4lb	4kg 8lb 13oz	7kg 15lb 6oz	10kg 22lbs
PACKAGE	Commuter Pedalboard, Padded Gigbag + 2m (6ft) pedal hook tape.	Gigman Pedalboard + 2m (6ft) pedal hook tape.	Showman Pedalboard + 3m (10ft) pedal hook tape.	Tourman Pedalboard + 4m (13ft) pedal hook tape

## DIAGO HOOK & LOOP SYSTEM

Diago Pedalboards use carefully selected pedal carpet and self-adhesive strips of pedal hook tape to secure effects pedals. Unlike some pedal carpets, ours does not deteriorate or become fluffy with repeated removal of pedals - it remains grippy for the lifetime of the board.

The strength of Hook & Loop (or Velcro® to most people) mustn't be underestimated - when the self-adhesive hook tape is applied properly, your pedals *will not* come loose.



DIAGO COMMUTER PEDALBOARD, REMOVED FROM GIGBAG

## ACCESSORIES

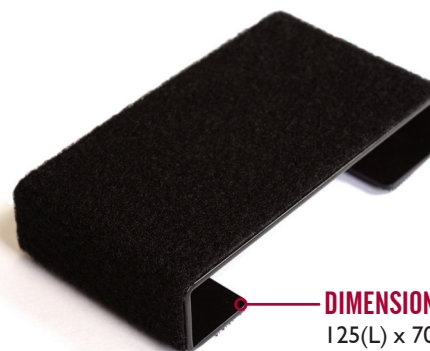
### PEDAL RISERS - PB10

(PACKAGED w/ EURO SLOT HEADER CARD)

The Diago Pedal Riser is a platform to raise the height of some pedals and make them easy to switch with your foot and to prevent you from messing up the settings of your other pedals.

It's made from 2mm (14 gauge) formed steel that will comfortably support up to 200kg (440lbs). We finish our risers in a black powder coat and wrap them in the very same pedal carpet that appears on our pedalboards.

Use as few or as many as you need to lift a single pedal, or your entire back row.



### DIMENSIONS

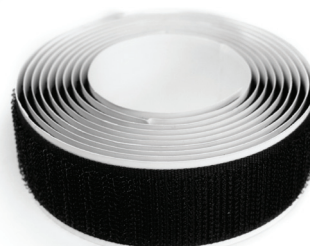
125(L) x 70(W) x 26(H) mm  
4.9(L) x 2.8(W) x 1.0 (H) inches

### SELF-ADHESIVE PEDAL HOOK TAPE - PB09

(PACKAGED w/ EURO SLOT HEADER CARD)

Two metres of our super-grippy pedal tape. Width: 25mm

(Note: Velcro is supplied with each pedalboard. See table above.)



[www.jhs.co.uk](http://www.jhs.co.uk)



[facebook.com/gearmagazine](https://facebook.com/gearmagazine)



[twitter.com/gearmagazine](https://twitter.com/gearmagazine)

EXCLUSIVE UK & EIRE TRADE DISTRIBUTORS:  
JOHN HORNBY SKEWES & CO. LTD., SALEM HOUSE, PARKINSON APPROACH, GARFORTH, LEEDS LS25 2HR, UK.  
©2012 JHS & Co. Ltd. Specifications and colours are subject to change without prior notice. Diago is a registered trademark.

QR  
Code

©2012 Diago Ltd. Specifications are subject to change without prior notice.

FOR MORE DETAILED INFORMATION VISIT: [www.diago.co.uk](http://www.diago.co.uk)



# LITTLE SMASHER

diago

The Diago Little Smasher is an amazingly lively and dynamic guitar amp head squeezed into a pedal-sized enclosure. It's ideal for small gigs, studio and home use, with more than enough volume to annoy the neighbours.

It combines the responsive tone and immediate simplicity of the most sought after amps; with the compact size, reliability and volume control needed by today's discerning guitar player.

## A FULLY-FLEDGED AMP HEAD

Drive any 4-16Ω speaker cabinet. Plug in a 4x12 for a rich and thunderous sound.

## DON'T BE FOOLED

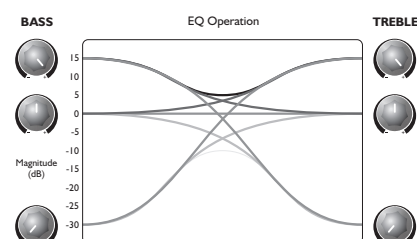
5 Watts doesn't sound like much, but when played through a good quality speaker cabinet, it's remarkably loud and will drown out your drummer with ease.

## CASCADING GAIN STAGES

The Little Smasher's Gain and Volume knobs control four analogue modelled cascading gain stages offering a range of tones from chimely clean to plexi-esque rock crunch.

## ACTIVE EQ

Because the two-band EQ is active, it behaves like a three-band. With a massive 15dB boost and 30dB cut on each control, it's possible to achieve a scooped rock tone, or an in-your-face midrange hump that usually requires a mid control. The graph below shows how the two parameters affect the EQ curve.



## NEED MORE GAIN?

It's designed to work especially well with pedals up front if you need to push it further or want multiple channels. It also sounds great with modulation effects, delays and reverb.

## PUT IT ON YOUR PEDALBOARD

At just 600g (1.3lbs), and at about the size of an effects pedal, it fits perfectly in your pedalboard at the end of your signal chain. Then all you need is a speaker cable out to your cabinet, and you're ready to rock.

## FORMED STEEL ENCLOSURE

The Little Smasher is housed in a 2mm (14 gauge) fabricated steel case, with a satin powder coat finish for great strength, rigidity, and a sleek, contemporary look.



## VELCRO & RUBBER PADS INCLUDED

Stick it to your pedalboard with the velcro strips, or protect your antique table with the self-adhesive rubber pads.



## HI-Z GUITAR INPUT

Plug your guitar directly into the Little Smasher, or route your signal via some effects pedals up front.

## POWER SUPPLY INCLUDED

A Diago Micropower9 9V DC power supply comes with each Little Smasher. At full power, it needs roughly 600mA of the Micropower9's 1000mA capacity.

## SPEAKER OUTPUT

Plug the output of the Little Smasher into any 4-16Ω speaker cabinet.

**DO NOT** plug this into an effects pedal, a mixing desk, or the input of another amp. You will probably fry your gear.

FOR MORE DETAILED INFORMATION VISIT: [www.diago.co.uk](http://www.diago.co.uk)

# PATCHFACTORY

## SOLDERLESS PATCH CABLE SYSTEM

diago

The Diago Patchfactory allows you to build custom length patch cables, without additional tools or specialist skills. Anybody can build a flawless cable.

### DESIGN YOUR PERFECT PEDALBOARD

Custom length patch cables allow you to lay out your pedalboard exactly how you want, instead of being limited by the pre-made lengths your local store carries.

Our patch plug heads are just 11mm in length, making them the lowest profile solderless patch plugs on the market. Get your pedals closer together to maximise the space on your pedalboard.

### STRONG, RELIABLE CONNECTIONS

Our plug caps use a fine, metric thread so they stay tight, and a coin slot so you can apply plenty of force with no additional tools.

### EASY ASSEMBLY

We have ensured that our solderless cable system is as easy as possible to assemble, whilst retaining maximum reliability.

### HIGH-QUALITY COMPONENTS

The Diago Patchfactory system uses our own cable, designed in-house in the UK. It has a super-low capacitance of 30pF/ft (approx. 100pF/m) to prevent the treble roll-off caused by high capacitance in poor quality cables.



DIAGO PATCHFACTORY KIT - PF01

## BUYING OPTIONS

We've put together a few different ways to buy Patchfactory components, because everyone's situation is different.

Check out the options below, and decide which suits your needs best:

### DIAGO PATCHFACTORY SOLDERLESS PATCH CABLE KIT - PF01 (BOXED)

This kit provides everything you need to build 5 perfect patch cables, and is the best starting point if you want to move your rig over to the Diago Patchfactory patch cable system.

- 10 x Solderless 1/4" Angled Patch Plugs
- 10ft (3.5m) Patch Cable
- 1 x Diago Cable Cutter

### PAIR OF DIAGO ANGLED PATCH PLUGS - PF02 (PACKAGED w/ EURO SLOT HEADER CARD)

Don't want to buy a whole kit? Purchase just a pair of plugs, and whatever length of cable

- 2 x Solderless 1/4" Angled Patch Plugs

### BULK DIAGO ANGLED PATCH PLUGS - PF03 (LOOSE)

Buy our Patchfactory plugs in bulk, to be sold loose in stores. Buy as few or as many as you need.

- Any number of Solderless 1/4" Angled Patch Plugs

### 1.5M OF DIAGO PATCHFACTORY CABLE - PF04 (PACKAGED w/ EURO SLOT HEADER CARD)

A generous length of Patchfactory cable, to top up your kit.

- 1.5m (5ft) of Cable

### BULK DIAGO PATCHFACTORY CABLE (ON REEL)

PF05-30 (30M/100ft)

PF05-75 (75M/250ft)

We've printed a marker every 30cm (1ft) down the length of our cable, for easy measuring in the shop. Buy as much or as little as you need.

- Any length of Cable

## DEALER TIPS

Some customers may not have the confidence to build their own cables, but still want custom lengths. Why not offer to build cables in-store, or sell a range of lengths on your website at 5cm increments? Building a cable takes less than a minute, so it shouldn't add to your selling costs.

Demonstrating how easy it is to build a cable will inspire confidence in your customers. Offering to demo the product for them in-store will increase the likelihood of making a sale.

FOR MORE DETAILED INFORMATION VISIT: [www.diago.co.uk](http://www.diago.co.uk)

©2012 Diago Ltd. Specifications are subject to change without prior notice.

# PEDAL POWER

diago

Most pedal power supplies are transformer type, linear regulated designs, which are cheap to design and develop, but are expensive to make (and therefore buy), noisier, bigger, heavier and they get much hotter!

**Diago effects pedal power supplies use switch mode technology, making them quiet, efficient and tiny, reliably powering your pedals so you can concentrate on making music.**

## 80% EFFICIENT

Diago power supplies are efficient, thanks to switch mode technology (around 80%, compared to about 40% for most linear transformer designs), so it doesn't get too hot.

## NOISE FREE

Hum and noise free operation, thanks to high quality components, careful filtering and intelligent circuit design.

## LIGHTWEIGHT, ROBUST

The internals are protected by a heavy duty ABS housing that is lightweight, but shock-resistant and tough.

## PLAYING ABROAD?

It will work in any country without the need for step-up or step down transformers (accepts 90-264V AC at 50-60Hz).

## IT'S SAFE

The design includes short circuit and voltage protection, and meets all national and international safety regulations.



### POWERSTATION - PS01

The Powerstation is Diago's flagship power supply. It supplies up to 3000mA of current, reliably powering up to about 30 pedals, with enough Deluxe Daisy Chains.

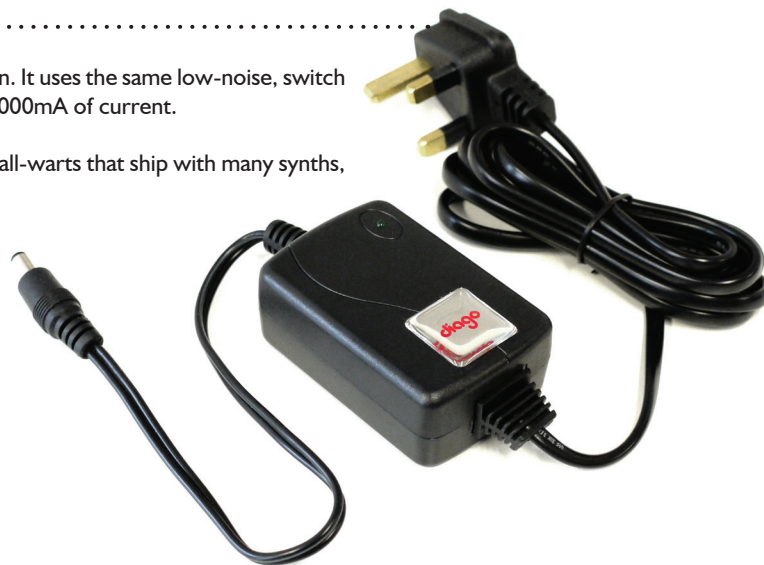
(Each Deluxe Daisy Chain PS02 will power up to 6 pedals. One is supplied with each Powerstation)

### MICROPOWER9 - PS10

The Micropower9 is a smaller version of the Powerstation. It uses the same low-noise, switch mode technology as its bigger brother, delivering up to 1000mA of current.

We designed it as a direct replacement for proprietary wall-warts that ship with many synths, samplers and larger pedals (see reverse for details).

It also works great with a Deluxe Daisy Chain (sold separately) as a power supply for smaller pedalboards - we recommend up to about 6 pedals.



## COMPATIBILITY

**Diago Power Supplies will power any product requiring 9V DC.**

They deliver power via Boss-style 2.1mm Barrel plugs, but using Diago's range of Adaptors, they will power virtually any pedal. We manufacture adaptors for Isolation, Positive Ground, 18V, and a range of plug shapes, sizes and polarities (see reverse of this page).

We have also put together a fairly comprehensive list of effects pedals past and present, and identified which adaptors they need, if any, to work with Diago Power Supplies. Please visit our website.

FOR MORE DETAILED INFORMATION VISIT: [www.diago.co.uk](http://www.diago.co.uk)

©2012 Diago Ltd. Specifications are subject to change without prior notice.



## TECH SPECS

MODEL	POWERSTATION - PS01	MICROPOWER9 - PS10
OUTPUT	9V DC @ 3000 mA (27W)	9V DC @ 1000 mA (9W)
INPUT	90-264VAC @ 50-60Hz	90-264VAC @ 50-60Hz
EFFICIENCY	~80%	~80%
LINE REGULATION	±0.5% max	±0.5% max
LOAD REGULATION	±1% max	±1% max
MAINS CABLE INLET	2m figure 8 lead IEC320-C8	2m figure 8 lead IEC320-C8
OUTPUT BARREL	2.1 x 5.5 x 12mm female barrel, centre-negative	2.1 x 5.5 x 12mm female barrel, centre-negative
DIMENSIONS	95 x 42 x 28 (mm)	74 x 49 x 28 (mm)
PROTECTION	Short circuit, overload & over voltage protection	Short circuit, overload & over voltage protection
OPERATING TEMPERATURE	0°C to +40°C	0°C to +40°C
STORAGE TEMPERATURE	-40°C to +85°C	-40°C to +85°C
APPROVAL	CE, UL, cUL, TUV, CB, BSMI, RoHS and WEEE	CE, UL, cUL, TUV, CB, BSMI, RoHS and WEEE
WEIGHT	~200g (7oz)	~70g (2.5oz)
PACKAGE	<ul style="list-style-type: none"> <li>1 x Diago Powerstation Power Supply</li> <li>1 x 2m detachable mains power cable</li> <li>1 x Diago Deluxe Daisy Chain</li> </ul>	<ul style="list-style-type: none"> <li>1 x Diago Micropower9 Power Supply</li> <li>1 x 2m detachable mains power cable</li> </ul>

## POWER ADAPTORS

Diago Power Adaptors allow the Powerstation and Micropower9 to power 18V pedals, noisy digital pedals and vintage positive ground pedals.

### 18V ADAPTOR - PS08

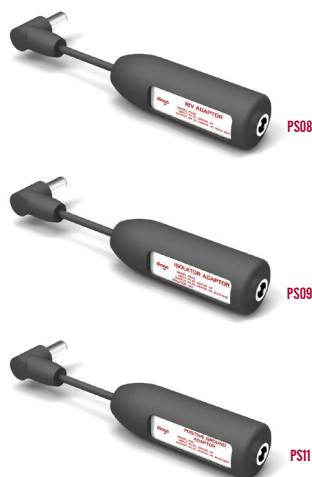
- For pedals that require 18V DC.
- Current draw 30mA max.
- e.g. MXR Stereo Chorus

### ISOLATOR - PS09

- For noisy digital pedals, that buzz when daisy-chained with other pedals.
- Current draw 110mA max.
- e.g. Line 6 Tonecore.

### POSITIVE GROUND ADAPTOR - PS11

- For pedals with a positive signal ground, allowing them to be powered alongside normal, negative ground pedals.
- Current draw 30mA max.
- e.g. Many Germanium pedals.



## PLUG ADAPTORS

Diago power supplies follow the Boss convention of **centre-negative**, **2.1mm barrel plugs**. Our plug adaptors allow our power supplies to power pedals with more unusual power sockets.

### GREEN ADAPTOR - PS03

Centre-positive, 2.5mm barrel plug.

### BLUE ADAPTOR - PS04

Positive tip, 3.5mm mini jack plug.

### RED ADAPTOR - PS05

Centre-positive, 2.1mm barrel plug.

### WHITE ADAPTOR - PS06

9V battery snap connector.



## REPLACING PROPRIETARY WALL-WARTS

The Micropower9 is a great alternative to 9V DC wallwart power supplies. Its in-line design and tiny body make it discrete, and at 1000mA it has a much higher rating than most of the products listed below.

It's also great for dealers - instead of stocking 20+ different supplies, you can just stock the Diago Micropower9.

**The Micropower9 directly replaces all of the following power supplies:**

**Akai:** MP9 / MP9 II / MP9 3  
**Alesis:** P6  
**Behringer:** PSU-SB  
**Boss:** PSA-240 / PSA-230S / PSA-120 / PSA-120S / PSA-230ES / PSB-1U  
**Casio:** AD-5 / AS-5EL / AD5-ML / AD-5MLE-TC I  
**Danelectro:** DA-1  
**DigiTech:** PS200R  
**DOD:** PS200R / PS125 (with Blue Adaptor)  
**Dunlop:** ECB-002 (with Blue Adaptor) / ECB-003  
**Electro-Harmonix:** (all international versions) 9.6DC-200 / 9DC-100 (with Blue Adaptor) / 9DC-500 (with Blue Adaptor) / 9L-DC-500 (with Green Adaptor)  
**Eventide:** Factor Pedals (with Green Adaptor)  
**Fishman:** 910-R  
**Fulltone:** FPS-1 / FPS-2 (with Red Adaptor)  
**Godlyke:** Powerall PA-1  
**Guyatone:** AC-2  
**Harman / HPro:** PS200R  
**Ibanez:** AC109 / AC309 / AC509  
**Korg:** A9600B / A30950B / KAC9500 / KAC9A6 / KAC306 / AC6 / KAC102 / KA183 / KA186 / KA189  
**Line 6:** DC1  
**Maxon:** AC210N  
**Morley:** DS-120930HI / Morley 9V  
**Pignose:** AC9 / PA7 (with Blue Adaptor)  
**ProCo:** RPS-1 (with Blue Adaptor)  
**Rocktron:** DC-Ontap  
**Roland:** PSB-120 / PSB-230 EU  
**Source Audio:** SAI50  
**Stagg:** PSU-PV1AR  
**T-Rex:** Power Tool 9  
**Tech21:** DC1 (with Blue Adaptor) / DC2  
**Visual Sound:** ISpot  
**Yamaha:** PA-D09 (with Red Adaptor)  
**ZOOM:** AD-0006 / AD-0006/E

## DAISY CHAINS

### DELUXE DAISY CHAIN - PS02

6 x centre-negative 2.1mm barrel plugs. Power even more pedals from a single Powerstation or Micropower9 by adding another Daisy Chain. Rated up to 3000mA.

### BLACK ADAPTOR EXTENSION - PS07

Centre-negative 2.1mm barrel plug. Reach around large pedals with this 30cm extension cable.



**www.jhs.co.uk**

EXCLUSIVE UK & EIRE TRADE DISTRIBUTORS:  
**JOHN HORNBY SKEWES & CO. LTD., SALEM HOUSE, PARKINSON APPROACH, GARFORTH, LEEDS LS25 2HR, UK.**  
 ©2012 JHS & Co. Ltd. Specifications and colours are subject to change without prior notice. Diago is a registered trademark.



facebook.com/gearmagazine



twitter.com/gearmagazine

QR  
Code

FOR MORE DETAILED INFORMATION VISIT: **www.diago.co.uk**