



2019 International Product Catalogue

Australian Innovation | Global Audience



LSC

Corporate Profile

LSC Lighting Systems has been at the forefront of the lighting industry for almost 40 years, forging an enviable reputation for innovative products, consistent reliability and unequalled product performance.

Along with our commitment to manufacturing certified Australian-made products, LSC continues to ensure higher levels of reliability and longevity across the entire product range.

With increasing global demand for LED lighting, LSC is investing heavily in R&D, evidenced by the development of new, patented and advanced LED Drive Technology. These innovations are now available within the current product portfolio and will be integrated into new and exciting LSC products in the future.

LSC's ever-increasing range of high-performing products is available for purchase through our extensive network of dealers and resellers in over 40 countries worldwide. Live performance, traditional theatre, corporate entertainment, places of worship, schools, film, television, local community theatres, exhibition and architectural lighting sectors are all catered for by LSC's vast product portfolio.

Proudly Australian-owned and operated, LSC produces 100% Australian-made products from design to manufacture.

LSC and our distribution network look forward to discussing any future projects with you.

Each featured product in this catalogue has an associated QR code next to it. This is a 3D bar code which, when scanned with a smart phone, will link you directly to the relevant product page on the LSC website. Please visit the iPhone or Android app store to download a suitable QR reader. LSC has no responsibility for the use of any third-party application or the use of the QR code.

Contents

Corporate Profile	01
LSC Innovation	02
Houston X (New for 2019)	03
Control Desks	
Clarity	04
Clarity LX Consoles	06
Clarity for Mac PC VX Wings	07
Mantra Lite	08
Mantra Mini (New for 2019)	09
maXim	10
MINIM	11
Ethernet DMX Distribution	
NEXUS	13
MDR	14
MDR-DIN (New for 2019)	15
LED-CV4 (New for 2019)	15
DNA	16
Dimmer Distribution	
UNITY	18
GenVI Rackmount Wallmount	20-21
FILMPRO	23
EKO	24
ePlates	25
LNET	25
RED3	27
REDBACK Wallmount (New for 2019)	30-31
REDBACK Patch Bay	30-31
APS Rackmount Wallmount	32-33
PowerPoint	34
LDT	35
Projects, Tours and Installs	36



LSC Innovation

LSC has a long and proud history of innovation. Our founder, Gary Pritchard, was one of the original 12 engineers who developed the USITT DMX-512 standard. In 1986 we produced the world's first portable DMX console and in 1987 we released the world's first rackmount DMX dimmer rack.

Throughout the 1990s the innovation continued, with many other world-first products: ISONODE, ISOPORT, Soft-LINK, Tour Series 2RU dimmer racks, Atom, Axiom and Precept CSM. From 2000 onwards we introduced Auto-Power for seamless power control of moving lights, then the MDR range of RDM upgradable splitters and the LNET communications backbone to provide crossover between entertainment and architectural systems.

In 2010 we again led the world with TruPower, which provided the first true dimmer bypass technology for safely powering moving lights and LEDs. We released the Mantra Lite in 2016 and it won the prestigious PLASA Award for Innovation for its ease of operation and powerful feature set.

Our R&D team, still led by Gary Pritchard, continually creates new products based on direct market feedback. We are proud of our tradition of communicating with our dealers, end users and consultants to better understand their needs. This has led us to develop original products that provide unique solutions to common problems.

This year we will release five new products:

- > **Mantra Mini** – an installation version of Mantra Lite for archtainment installations, due for release mid-2019 (see Page 9)
- > **Wall plates for Mantra Mini** – touchscreen wall plates due for release in late-2019
- > **LED-CV4** – DINrail-mounted true 16-bit LED dimmer (a world-first), available now (see Page 15)
- > **MDR-DIN** – DINrail-mounted DMX/RDM data splitter with individual RDM Bypass per port (a world-first), available now (see Page 15)
- > **Houston X** – a revolutionary software system to monitor and remotely configure the most popular LSC products. Due for staged release throughout 2019.

Houston X

The Product to Rule Them All

Houston X is the glue that binds the entire LSC Pro Range together in your rig. Houston X is a monitoring and remote configuration tool that works with APS, GenVI, EKO, TEK0, MDR-DIN, LED-CV4, UNITY and Mantra Mini.

One tool, one location – allowing complete monitoring and control of all connected products. Set a DMX address, set a channel to dim or TruPower, check the temperature, test a channel (rigger's control), find DMX cabling faults – on any product anywhere. Houston X uses RDM, LNET and Ethernet to talk to different LSC products, utilising the fastest appropriate technology for each product.

Identify Faults Quickly

Houston X monitors the state of every connected LSC product. All status indicators from each product are replicated in Houston X. Any faults, such as loss of DMX are reported in a single unified list on Houston X, with the date and time of the occurrence. If there are no faults, then a large "all clear" indicator is shown. If a fault occurs, this indicator flashes red. Faults can be marked as "acknowledged" whilst the problem is being resolved, changing the indicator to yellow. Any new faults will change the indicator to flash red again. Once all faults are cleared, the green light reappears.

Store Configurations

- > Rental companies can easily restore hire stock to a known configuration in just a few moments with just a computer and USB/DMX interface.
- > Theatres can recall the standard house patch after a custom show with a few mouse clicks on a computer located in an office (rather than visiting the dimmer room), recall the matinee settings in a matter of minutes and then change back to rehearsal mode or standard rig when required.
- > TV stations can create a custom patch and configuration for a new show on a PC and then push this configuration to the system. Swapping shows is as simple as loading the config file and pushing a button. The entire system is updated from one location.

Best of all – it is just a simple software upgrade to existing LSC products to make them Houston-X enabled.





Hardware

Houston X runs on Windows and Mac computers. There are two options for RDM interfaces:

- > The QX/1 provides a low-cost, dedicated RDM-only connection for configuration of systems.
- > The QX/2H provides an inline interface. The two inputs receive DMX in from any brand/model console and the two outputs transmit the DMX merged with RDM data out to the rig. It works with any non-RDM console and provides the full versatility of Houston X into existing installations.

Future Developments

We have big plans for Houston X. The features outlined here are just the beginning. In the future we plan to offer Houston X for Android and iOS tablets and smart phones, with interfaces via Art-Net and sACN. System logging and auditing will be possible. A dedicated hardware box will be released to allow permanent installations to be audited and logged and even accessed remotely via the internet if required. Larger systems will be catered for by allowing connection of multiple hardware devices for an unlimited number of DMX Universes. The RDM functionality will be extended to cover third-party moving lights and LED fixtures.

Coming to a DMX Universe near you in 2019.

Welcome to the future – Houston X.



Clarity

Scalable Power to Control

Regarded as one of the most powerful software packages for lighting and media control on the market today, Clarity has rewritten the standard for computer-based lighting control.

Co-developed by LSC and OpenClear, Clarity software has revolutionised the lighting industry with advanced features and a refreshing way of looking at lighting control. From small venues to complex, media-rich TV and live production shows. Clarity has a scalable solution to suit your needs.

LSC Clarity is designed to cater for everyone: from novice to professional, from touring show to theatrical production, from conventional lighting needs to advanced media control – all at a price that is truly affordable.



Features

- > Powerful lighting and media control software
- > Smart control of multi-array LEDs with simple control of individual segments
- > Seamless fixture substitution with cloning
- > Media Server Integration with full CFTP and MSEX support, with thumbnail representation, works with all industry standard media servers
- > Audio fixtures allowing programming and playback of multiple audio with fade In/Out
- > Presets – the next generation of Presets: reusable Palettes and Presets that can be applied to any type and quantity of fixtures
- > Rig view with 2D simulation and easy fixture selection – allowing users to import their own images or rig plans
- > Powerful Dynamics editor and Effects Engine with smooth cross-fading of effects
- > Full drag and drop patching with intelligent fixture cloning utilising the Carallon Fixture Database
- > Multiple programmers – each with unlimited undo/redo, work on different parts of the show any time
- > LED pixel mapping with picture and video playback – import any standard media files
- > Time Presets and Live-Time busking interface
- > Unlimited Groups, Presets, Presets, Cues and Chases
- > Audio playback – time stamp any audio file against a Cue List and playback the entire A/V show at the press of a button
- > MIDI/SMPTE time synchronisation, Real Time calendar/scheduler, OSC for remote control and tablet integration
- > Full tracking Cue Lists – with macro scripts and undo/redo of Cue record/delete

Clarity can be run on a variety of different platforms depending on the system requirements.

Clarity LX

Fully integrated lighting consoles with an inbuilt computer running the Clarity software.

Clarity for PC

Run the Clarity software on a Windows-based computer and still get the full functionality from the software. Connect optional QX USB to DMX converters or VX expansion wings.

Clarity for Mac

Run the Clarity software on a Mac-based computer similar to the PC version with the same QX and VX expansions available.

These options are outlined further on the following pages.

Code	Description
Clarity LX600	Clarity LX600 Console - fully integrated lighting and media console with 4 DMX outputs, 8,000 channel control (DMX, Art-Net and sACN), 9 colour touchscreens, 15 motorised playbacks with FaderIdent, motorised Grand Master, DBO and slide-out keyboard. Supplied with 2 x LED-LITE, printed manual and dust cover.
Options	
LED-LITE	15" Gooseneck Console Light - for LSC control desks
LX600/DC	Clarity LX600 Dust Cover - black, hard-wearing fabric





Rod Bedford, USA



ABC Studios, Melbourne



The Footy Show, Australia



Clarity LX Consoles

Scalable Power to Control

The Clarity LX is a powerful, fully integrated lighting and media console co-developed by LSC and OpenClear. Leveraging the power and simplicity of Clarity software, the Clarity LX is the world's first true multimedia console pushing the limits of control to new levels.

Clarity LX has been successfully used at thousands of concerts and festivals worldwide and by major television networks, rental companies, entertainment venues and places of worship.

Features include a touchscreen, FaderIdent™ for playback mode indication, dual external DVI-D outputs and SSD storage.



LX600 Console

Hardware	LX600
Displays	<ul style="list-style-type: none"> > 1 x 10.4" 800 x 600 pixel touchscreen > 1 x 17" 1280 x 1024 touchscreen > Both mounted on a pivoting panel
Fader Playbacks	<ul style="list-style-type: none"> > 99 split pages of 15 x 60mm motorised faders with RGB indicator, each with select, go, pause/back buttons > 99 pages split into two groups
Button Playbacks	<ul style="list-style-type: none"> > 4 pages of 60 x action buttons for Group/Palette/ Preset/Cue/Macro access - each with LCD touchscreen for labelling and advanced control
Programmer	<ul style="list-style-type: none"> > 1 x programmer module comprising 10.4" touchscreen > 20 feature buttons, 4 push/turn encoders with 8 modifier buttons > Full numeric keypad, 2 x 10 button banks, Intensity Wheel and 8 key-control buttons with full-colour LCD labelling
Capacity	<ul style="list-style-type: none"> > From 8,000 DMX slots

Hardware	LX600
Keyboard	<ul style="list-style-type: none"> > Slide-out alphanumeric keyboard with trackpad
External Displays	<ul style="list-style-type: none"> > Dual external DVI-D Out
Grand Master	<ul style="list-style-type: none"> > Motorised Grand Master + DBO
Inputs/Outputs	
Local	<ul style="list-style-type: none"> > 4 x DMX512/A outputs (XLR5)
Protocols	<ul style="list-style-type: none"> > DMX512/A, Art-Net, sACN
MIDI	<ul style="list-style-type: none"> > MIDI In, Out, Thru
SMPTE	<ul style="list-style-type: none"> > SMPTE LTC input via XLR3
Audio	<ul style="list-style-type: none"> > Stereo audio In and Out on balanced XLR3
Ethernet	<ul style="list-style-type: none"> > Dual Gb Ethernet ports
Storage	<ul style="list-style-type: none"> > 160GB SSD (Solid State Drive)



Clarity for Mac/PC and VX Wings

Scalable Power to Control

The Clarity software has been developed to run as native applications on both PC and Mac platforms. To allow users to evaluate Clarity, the software for both platforms is freely available to download from the LSC website. The free version of the software will run in demo mode, allowing full operation of all features, including saving a show – but with random blackouts.

Clarity allows multiple software licenses to be combined, therefore a production house can own multiple CT Dongles (that each allow separate shows) or multiple dongles can be used of a larger show allowing the sum of the licensed channels to function.

Clarity licenses use a channel count rather than a Universe count. This means that any CT dongle can control multiple Universes but with a maximum channel count depending on the CT version.

Many system configurations can be created using the basic building blocks of Wings, Nodes and software licenses. Entry-level systems can start as a CT/1 license plus a QX1 Node and expand to create a multiple DMX Universe system using multiple VX20 and VX10 Wings or combining Wings with the simple QX Nodes as required. The combinations are endless due to the flexibility of using multiple software licenses and Wings/Nodes in the one system.



QX2



QX1

Code Description

Clarity Lighting Control Software

CT/QX	Clarity Lighting Control Software Suite - 128 channel with QX1 node
CT/1	Clarity Lighting Control Software Suite - for control of up to 512 DMX channels
CT/2	Clarity Lighting Control Software Suite - for control of up to 1,024 DMX channels
CT/4	Clarity Lighting Control Software Suite - for control of up to 2,048 DMX channels
CT/16	Clarity Lighting Control Software Suite - for control of up to 8,192 DMX channels
CT/U	Clarity Lighting Control Software Suite - for control of up to 65,536 DMX channels

Clarity Wings / Requires Software Licence as above

VX10	Clarity VX10 Playback Wing - 10 playbacks, 2 x DMX outputs. Requires CT/x software license, sold separately.
VX20	Clarity VX20 Playback Wing - 20 playbacks, 4 x DMX outputs, MIDI In/Out, 6 x GP inputs. Requires CT/x software license, sold separately.

Clarity Nodes / Require Software License as Above

QX1	Clarity USB to DMX Node - 1 DMX, RDM enabled
QX2	Clarity USB to DMX Node - 2 DMX, RDM enabled

LED Desk Lamp

LED-LITE	15" Gooseneck Console Light - for LSC control desks
----------	---



VX10 Wing



VX20 Wing



Mantra

What you imagine, you create

The Mantra family provides easy-to-use, yet powerful control of conventional, LED and moving lights. Power and simplicity in one integrated package.

The Mantra Lite is ideal for live control of lights in theatres, places of worship, schools, pubs and clubs. The Mantra Mini is for archtainment applications including shop window displays, building facade lighting, themed attractions and any situation where simple recall of pre-programmed moods is required.

It is also possible to combine a Mantra Mini with a Mantra Lite to provide simple, preset recall and live control of lighting in the same venue.

Features

- > Easy-to-use app-based, smart-phone style operation
- > Record up to 100 Cue Lists Chases, each containing up to 250 Cues
- > Use animations to quickly programme colour and movement into a show
- > Undo/redo

Mantra Lite

What you imagine, you create

Features

- > Control up to 24 fixtures, each with a dedicated yellow intensity fader
- > Connect up to two wings, each providing control of an additional 12 fixtures and 10 playbacks, plus one additional DMX Universe
- > High-resolution 18cm capacitive touchscreen with app-based operation, providing a familiar smart-phone style user interface
- > On-screen context sensitive Help
- > Easy updating via USB stick

New for 2019

- > Multipatch
- > Live speed controls
- > Now supports QX1 for additional DMX Universes



Mantra/LT + 2 x Mantra/WG



Mantra/LT + Mantra/WG

Mantra/WG

Code	Description
Mantra Lite Lighting Console	
MANTRA/LT	Mantra Lite - compact LED and moving light controller, 24 fixtures, 10 playbacks, 18cm multi-touchscreen, 1 x XLR5 DMX/RDM output, Art-Net/sACN, dual USB, internal 110/240V power supply with UPS function. Includes dust cover.
MANTRA/WG	Mantra Lite Wing - provides 12 additional fixture faders, 10 additional playback faders, 1 additional DMX Universe and output. Up to two wings can be connected to a single Mantra Lite. USB powered. Includes dust cover.





Mantra Mini

What you imagine, you create

Features

- > Controls up to 48 fixtures across two DMX Universes
- > Plays any Mantra show, record via offline editor or using a Mantra Lite console
- > 9-module wide DINrail chassis
- > Powered by PoE or 12V-24V DC supply
- > Wi-Fi access point built-in for system configuration via Mantra offline editor software
- > Day/date time scheduler with configurable Daylight Saving Time
- > Remote triggering over Ethernet via UDP and OSC
- > Optional remote wall plates for memory recall (coming late 2019)
- > Two fire/emergency trigger inputs

New for
2019



Code	Description
Mantra Mini	
MANTRA/MN	Mantra Mini – DINrail mount playback unit with 2 x DMX Out, Ethernet, expansion port. Requires 12V-24V DC or PoE power supply.



maXim

Powerfully Simple

The maXim range provides fantastic flexibility, programming ease and a large selection of features normally found in consoles costing twice the price. Stand-alone memory/manual fader-based operation or when coupled with the innovative moving light (PaTPad) controller, the maXim can provide a size and style to suit the most discerning user.

The moving light controller provides up to six simultaneous parameters at your fingertips, allowing rapid programming of advanced functions such as fans, effects, Groups, Presets, Palettes and filters. Utilising the large memory capacity of the maXim, recording and replaying large and complex effects is a breeze.

Features

- > Dual preset, wide or memory playback modes
- > Multiple Submasters
- > Moving light control (PaTPad option)
- > In and Out time faders
- > Programmable Chase functions
- > Quick Grab facility
- > Ideal busking console
- > Dedicated stack playback
- > Midi input/output option

Code	Description
MAX/L	maXim L - 72 faders, 1,024 DMX channel console, MIDI, USB, VGA
MAX/LP	maXim LP - 72 faders, 1,024 DMX channel console, MIDI, Moving Light Control, USB, VGA
MAX/XL	maXim XL - 96 faders, 1,024 DMX channel console, MIDI, USB, VGA
MAX/XLP	maXim XLP - 96 faders, 1,024 DMX channel console, MIDI, Moving Light Control, USB, VGA
Options	
MAX/USB	SVGA, MIDI and USB Input/Output Module - to suit all maXim consoles, can be installed into older maXims to replace floppy disc with USB
MAX/P	PaTPad Moving Light Upgrade Module - not available for MAX/S and MAX/M



MAX/XLP

MAX/LP



MINIM

Simply Easy

Attractively styled and utilising the popular LSC programming and playback system, the MINIM is an easy-to-use platform with quick access buttons for all major functions – no menu-driven systems here!

The 24 faders, 36 memories on 12 playbacks, external memory option, Chase and cross-fade control and an internal power supply make the MINIM an ideal console for schools, places of worship, rental and AV companies – in fact any situation where fast, easy-to-program lighting shows are required.

Features

- > 24 channel control
- > Dual preset, wide or memory playback modes
- > Programmable Chase functions
- > Quick Grab facility

Code	Description
MINIM	MINIM Lighting Console - 24 faders, 36 memory DMX channel console
Options	
MINIM/RE	MINIM 19" Rackmount Adaptor Kit
MINIM/DC	MINIM Dust Cover - black, hard-wearing fabric



MINIM

Console Light

- > Great quality
- > Remains cool in operation and is very efficient
- > Comes with a standard 3-pin XLR connection and is suitable for all LSC control desks (except Mantra) and REDBACK patch panels

Code	Description
LED Console Light for all LSC Consoles	
LED-LITE	15" Gooseneck Console Light - for LSC control desks



LED-LITE



With increasing global demand for LED lighting, LSC is investing heavily in R&D, evidenced by the development of new, patented and advanced LED Drive Technology.



NEXUS

Ethernet/DMX Converters

The NEXUS range of data distribution products offers conversion between Ethernet and DMX512. Using the Art-Net and Streaming ACN (sACN) protocols, the V2 software also provides RDM over Art-Net to increase the benefit of using NEXUS products in your rig.

Much more than a standard converter, the NEXUS range of both 1-port and 5-port interfaces offers many options including a protocol conversion tool for today's demanding shows.

Features

- > Simple Ethernet to DMX conversion
- > HTP DMX merge
- > Supports sACN and Art-Net protocols
- > Inbuilt patch
- > DMX backup mode
- > A DMX512 to Art-Net / sACN converter
- > A DMX512 splitter
- > An Art-Net backup

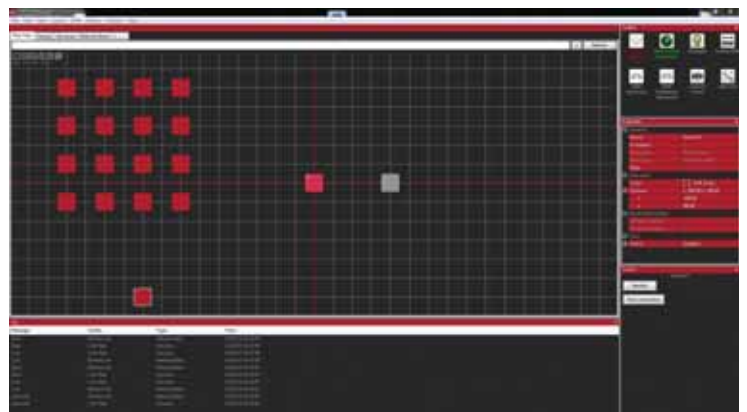
Code	Description
NXS1	NEXUS PoE - 1-port DMX/Ethernet converter
NXST	NEXUS Trussmount - 5-port DMX/Ethernet converter, with Velcro straps
NXST/P	NEXUS Trussmount - 5-port DMX/Ethernet converter, powerCON input, with Velcro straps
NXSR	NEXUS Rackmount - 19" 1RU, 5-port DMX/Ethernet converter
NXSR/P	NEXUS Rackmount - 19" 1RU, 5-port DMX/Ethernet converter, powerCON input
NXSS	NexLAN Windows and Mac configuration software for NEXUS units



NXST



NXS1



Nexlan Software

NXSR Rackmount



MDR

DMX/RDM Data Splitters

The MDR range offers fully opto-isolated inputs and outputs in either a 10-way or 5-way DMX512-A splitter package. The 5-way splitter is also available in a trussmount version in an extremely lightweight but robust PC-ABS plastic making it virtually impossible to break.

The MDR range of DMX512-A splitters are the only DMX splitters in the world that can be upgraded with RDM (Remote Device Management) after purchase. A simple plug-in daughter board provides the intelligence and can be installed in a few minutes.

This in-field upgrade option ensures your investment stays viable into the future.



Features

- > Dedicated DMX input and THRU ports
- > 5-way or 10-way output
- > All inputs and outputs electrically isolated and protected
- > Inbuilt termination switch
- > RDM upgradable or factory-fitted
- > Rackmount and trussmount available



MDRT

Code	Description
MDRT	MDR Trussmount Splitter 5-Way - 5-pin XLR input and output
MDRT/5	MDR Trussmount Splitter 5-Way - 5-pin XLR input and 5 x 3-pin XLR output
MDRR	MDR Rackmount Splitter 5-Way - 19" 1RU, 5-pin XLR input and output, upgradable to 10-way
MDRR/5	MDR Rackmount Splitter 5-Way - 19" 1RU, 5-pin XLR input and 5 x 3-pin XLR output, upgradable to 10-way
MDRX	MDR Rackmount Splitter 10-Way - 19" 1RU, 5-pin XLR input and output
MDRX/5	MDR Rackmount Splitter 10-Way - 19" 1RU, 5-pin XLR input and 5 x 5-pin + 5 x 3-pin XLR output
MDRJ	MDR Rackmount Splitter 10-Way - 19" 1RU, RJ45 Ethercon input and output
MDRT/R	MDR Trussmount Splitter 5-Way - 5-pin XLR input and output plus factory-fitted RDM processor module
MDRR/R	MDR Rackmount Splitter 5-Way - 19" 1RU, 5-pin XLR input and output plus factory-fitted RDM processor module, upgradable to 10-way
MDRX/R	MDR Rackmount Splitter 10-Way - 19" 1RU, 5-pin XLR input and output plus factory-fitted RDM processor module
MDRJ/R	MDR Rackmount Splitter 10-Way - 19" 1RU, RJ45 Ethercon input and output plus factory-fitted RDM processor module
Factory-Fitted Options	
/P	Factory-fitted powerCON Power Connector Option
Optional Upgrade Kits	
MDR/RDM	MDR Option - RDM Upgrade Kit, available for all models



MDRR

MDRJ



MDR-DIN

Your Project's Solution

An addition to the MDR range is now available as a DINrail-mounted unit – perfect for installations requiring a professional and reliable DMX splitter.

The dedicated DINrail-mounted device is a 4-way DMX splitter with Remote Device Management (RDM).

Unique to the MDR-DIN is the ability to individually enable or disable RDM on any of the four output ports – another LSC first.

Each DMX output is optically isolated to ensure your equipment is protected against mains-borne faults or earth loops.

With the versatility of the RJ45 connector option and a push-to-fit terminal version, the MDR-DIN is the product of choice for your next installation.

Features

- > DIN-mount 4-way DMX/RDM splitter
- > RDM discoverable
- > DMX In, Thru and 4 x DMX outputs
- > Individual isolation per output
- > Push-fit terminal connectors or RJ45 connector options
- > RDM enable/disable option per output – an industry first
- > Conforms to ANSI DMX and RDM standards
- > Remote monitoring and configuration via Houston X



Code	Description
MDRD/J	MDR-DIN Splitter - RJ45 input and output connectors and push-fit terminals on power input
MDRD/T	MDR-DIN Splitter - push-fit terminals on power, input and output connectors



mdr.lscighting.com.au

LED-CV4

LED by Design

The new CV4 is the first low-voltage LED dimmer produced by LSC.

We listened to the market and have filled the gap that existed for an affordable professional-quality LED dimmer. The CV4 excels with industry-best, 16-bit dimming ability that provides stepless dimming across the entire range from 0% to 100%, even when controlled by 8-bit DMX.

Each output is independently monitored for load and automatically shuts down in the event of an overload, then self-resets when the fault is cleared – no more replacing fuses if there's a problem.

The CV4 can output up to 20A with a 100% duty cycle, at either 12V or 24V, providing a significant cost saving where large amounts of LEDs are required.

New for
2019

Full configuration and monitoring is available via RDM and software updates can also be rolled out over RDM using the standard DMX cabling infrastructure.

Features

- > 4 channel x 5A constant voltage dimmer
- > 8-bit/16-bit operation
- > DMX addressing via front-panel rotary switches or RDM
- > RDM config and monitoring
- > Short cct protection with auto-reset
- > Current monitoring
- > 12V/24V operation
- > Variable frequency output
- > Remote monitoring and configuration via Houston X



Code	Description
LED/CV4	LED-CV4 Dimmer - 4Ch x 5A, 12V/24V, DMX/RDM, DINrail mounted



ledcv4.lscighting.com.au

DNA

Flexible Ethernet/DMX Cabling Systems

Distributed Network Architecture (DNA) products allow for easy installation of DMX infrastructure using low-cost Cat 5e/6 cable, standard RJ45 connectors (no soldering) and 'home-run' cable topography – making it easier for electrical contractors to install a robust DMX network.

The clever design allows for one or two Universes of DMX to be carried over a single piece of UTP/STP Cat 5e/6 and terminated using standard RJ45 connectors. For simplicity, the PCBs are sold in matching pairs, one for each end of the cable.

There is also an Ethercon to RJ45 option where two PCBs are provided to offer robust Ethernet connections where required.

A blank patch panel is available to custom-build your data distribution system using the DNA PCBs. Custom solutions with different connector combinations are available for larger projects.

Features

- > Flexible DMX or Ethernet connection options
- > Uses standard Cat5e/6 cable backbone with RJ45 connections
- > Future upgradable from XLR to Ethercon
- > Wall boxes and patch bay mounting options

Code	Description
DNA/D1	DNA Pair of Single DMX to RJ45 Converter PCBs - first PCB with 1 x 5-pin male XLR (A Series) to 1 x RJ45 and second PCB with 1 x 5-pin female XLR (A Series) to 1 x RJ45
DNA/D2	DNA Pair of Dual DMX to RJ45 Converter PCBs - first PCB with 2 x 5-pin male XLR (A Series) to a single RJ45 and second PCB with 2 x 5-pin female XLR (A Series) to a single RJ45
DNA/D11	DNA Pair of Dual DMX to RJ45 Converter PCBs - first PCB with 1 x 5-pin male and 1 x female XLR (A Series) to a single RJ45 and second PCB with 1 x 5-pin female and 1 x male XLR (A Series) to a single RJ45
DNA/E1	DNA PCB only - 2 x Ethercon (A Series) to RJ45
Options	
DNA/WP1	DNA 1 Gang Clipsal Series 2000 White Wall Plate - cutout for 1 x XLR or Ethercon connector, designed for vertical mounting
DNA/WP2	DNA 1 Gang Clipsal Series 2000 White Wall Plate - cutout for 2 x XLR or Ethercon connectors, designed for vertical mounting
DNA/WP4	DNA 1 Gang Clipsal Series 2000 White Wall Plate - cutout for 4 x XLR or Ethercon connectors, designed for vertical mounting
DNA/RP1	DNA Black Rack Panel - 19" 1RU, cutouts for up to 16 XLR or Ethercon (A Series) XLR connectors, supplied with blanking inserts for unused ports



DNA/WP4



DNA/WP1



DNA / RP 19" Rackmount Panel



DNA/E1



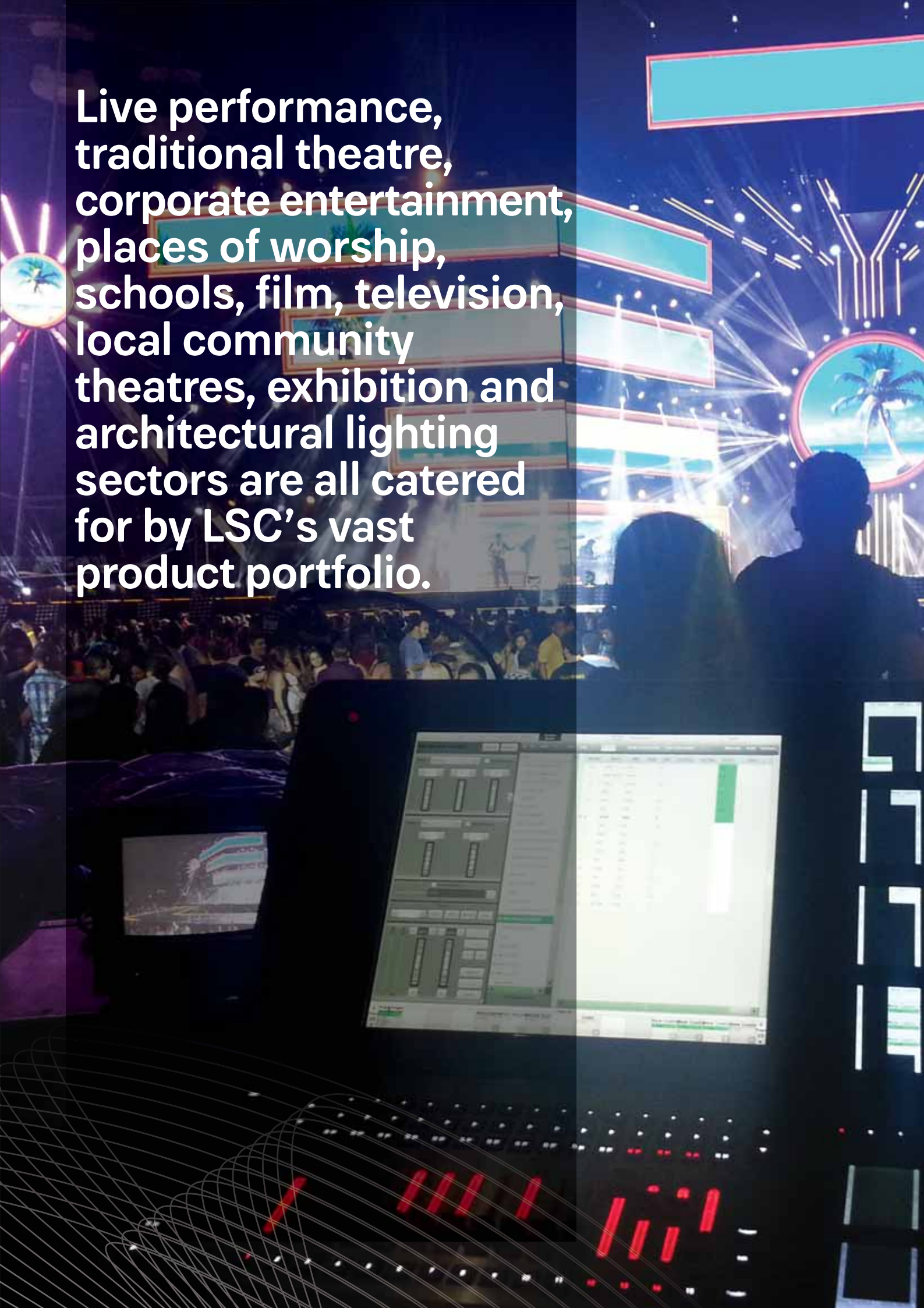
DNA / D1



DNA / D2



Live performance,
traditional theatre,
corporate entertainment,
places of worship,
schools, film, television,
local community
theatres, exhibition and
architectural lighting
sectors are all catered
for by LSC's vast
product portfolio.



UNITY

The Power to Control

UNITY is the next generation of installation dimming and power switching for controlling the latest technologies within theatres, concert halls and themed attractions worldwide.

Utilising the technology of LSC's award-winning and patented GenVI and LED Drive Technology dimming range, the UNITY cabinet dimmer system offers the complete package to control an array of LEDs, tungsten and power-switched fixtures seamlessly.

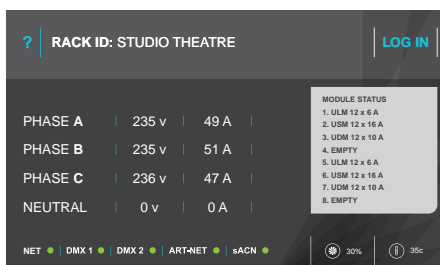
deSingel International Arts Campus, Belgium

Features

- > 48 or 96 channel cabinet sizes
- > Integrated power distribution
- > Top entry field and mains supply wiring
- > Hot swappable power modules
- > Power modules available for conventional dimming, LED drive dimming and hard-power switching
- > Power modules are 12 channel self-contained packs
- > Each channel with RCBO, individual status LED and selection switch
- > Centralised configuration module with powerful graphic touch interface
- > Dual DMX and Art-Net/sACN data inputs
- > Real-Time remote monitoring and RDM compliant
- > Remote monitoring and configuration via Houston X

Rack Status

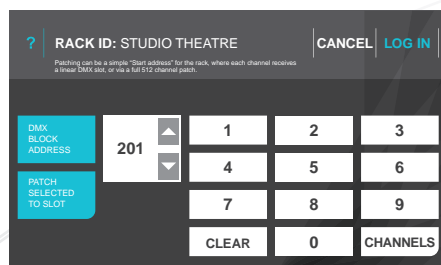
The status screen indicates phase voltage and current in Real Time, control input status and any fault conditions within the system.



Code	Description
Cabinets	
UIR48	UNITY 48Ch Installation Rack Frame
UIR96	UNITY 96Ch Installation Rack Frame
Control Module	
UCM	UNITY Control Module with Power Monitoring
Dimmer Module	
UDM12/10	UNITY Dimmer/Distribution 12Ch x 10A - RCBO, TruPower, UIR install
UDM12/16	UNITY Dimmer/Distribution 12Ch x 16A - RCBO, TruPower, UIR install
LED Module	
ULM12/6	UNITY LED Dimmer/Distribution 12Ch x 6A - RCBO, LED Drive, TruPower, UIR install
Switch Module	
USM12/10	UNITY Distribution 12Ch x 10A - RCBO, Relay, UIR install
USM12/16	UNITY Distribution 12Ch x 16A - RCBO, Relay, UIR install

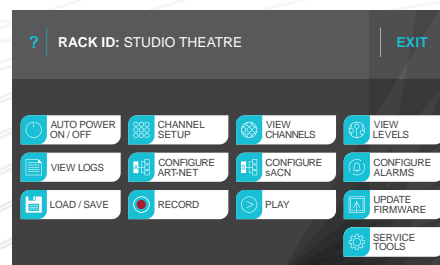
Patch

Each UNITY rack can be given a simple block DMX start address or each slot can be patched to a specific DMX address.



Main Menu

System configuration and set-up menu allowing the option to set channel information and load/save show settings within the UNITY system.



UCM – UNITY Control Module

The heart of the system is the UNITY Control Module (UCM) with an 18cm capacitive colour touchscreen and a simple app user interface, where the use of icons means intuitive control and system configuration. However, once the system is programmed the UCM is not essential but will continue to monitor and report current status information to a central controller over RDM or via LSC's HOUSTON reporting system.

With dedicated modules, each 48w or 96w cabinets can be loaded with any of the following 12-channel modules enabling a venue to customise as required:

- > UDM – dimming/TruPower relay bypass module
- > USM – switching relay module
- > ULM – LED dimming/TruPower relay bypass module

UDM – UNITY Dimmer Module

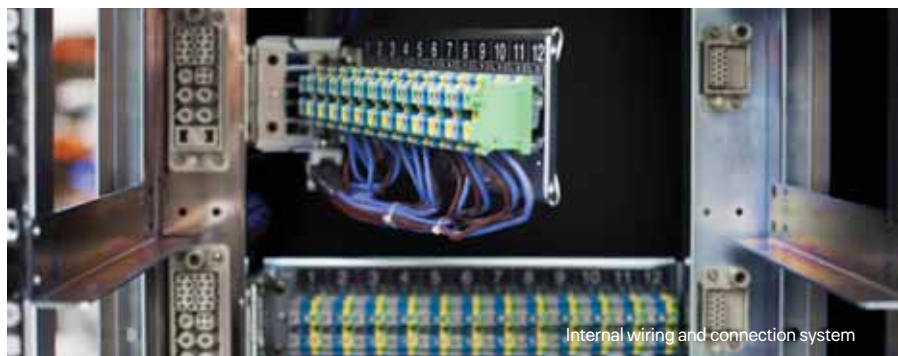
Based on the successful and revolutionary GenVI dimmer with TruPower technology pioneered by LSC, the UNITY Dimmer Module (UDM) provides 12 channels of control. Each channel can be individually configured for direct power control or for dimming of traditional lamps.

USM – UNITY Switch Module

The 12-channel UNITY Switch Module (USM) uses sophisticated control to ensure the initial switch On and switch Off are at a point where the mains voltage is around zero volts (zero crossing point). This prevents stress on the devices it is powering, helps to prolong the life of the RCBOs and reduces nuisance tripping resulting in a stable and functional system.

ULM – UNITY LED Module

The UNITY LED Module (ULM) is a 12-channel LED dimming module utilising LSC's patented LED Drive Technology. Each channel can be configured for direct power control or for dimming either traditional lamps or leading-edge, phase-controlled dimmable LEDs. There is an option for 6A per channel. Perfect for the control of LED house lights and LED practicals on stage.



Internal wiring and connection system



Top: Front of UNITY Dimmer Module (UDM)
Middle: Rear of UNITY Dimmer Module (UDM)
Bottom: UNITY Control Module (UCM)



Right: UNITY 48-way Installation Rack
Far right: UNITY 96-way Installation Rack



GenVI Rackmount

A New Era in Power and Dimming Control

In response to the changing demands of the marketplace, LSC introduced the GenVI Advanced Dimming and Power Distribution System. The GenVI represents the sixth generation of dimmers produced by LSC over its 40-year history. It was designed utilising this extensive experience and knowledge of today's complex lighting and power control requirements.

Equally at home in the lighting, sound or video markets and able to be permanently installed or remain portable, the GenVI Advanced Dimming and Power Distribution System allows the user to configure any of its outputs in any

combination, ranging from an 8-bit or 16-bit dimmer to a direct power relay channel (TruPower). This enables the GenVI to dim traditional lamps or power moving lights, LED fixtures, video screens or audio power amplifiers – ideal for any situation where controlled power distribution is required.

Features

- > User selectable PTFD touring dimmer or power distribution per channel
- > No minimum load per channel
- > RCBO per channel
- > 10A, 25A and 63A per channel output current
- > Low power mode reduces heat loss
- > Colour touchscreen user interface
- > RDM compliant
- > Multiple output socket options available
- > Remote monitoring and configuration via Houston X

Code	Description
12Ch x 10A	
GEN12/10S	GenVI Rackmount Dimmer/Distribution 12Ch x 10A - RCBO, 19" 3RU, TruPower, DMX, colour touchscreen, Schuko outputs, 3-phase tail
GEN12/10T	GenVI Rackmount Dimmer/Distribution 12Ch x 10A - RCBO, 19" 3RU, TruPower, DMX, colour touchscreen, hardwired, Terminal connectors on input and outputs
GEN12/10W	GenVI Rackmount Dimmer/Distribution 12Ch x 10A - RCBO, 19" 3RU, TruPower, DMX, colour touchscreen, 2 x 16-pin Wieland outputs, 3-phase tail
GEN12/10X	GenVI Rackmount Dimmer/Distribution 12Ch x 10A - RCBO, 19" 3RU, TruPower, DMX, colour touchscreen, 2 x 19-pin Socapex outputs, 3-phase tail
12Ch x 16A	
GEN12/16S	GenVI Rackmount Dimmer/Distribution 12Ch x 16A - RCBO, 19" 3RU, TruPower, DMX, colour touchscreen, 2 x 19-pin Schuko outputs, 3-phase tail
GEN12/16T	GenVI Rackmount Dimmer/Distribution 12Ch x 16A - RCBO, 19" 3RU, TruPower, DMX, colour touchscreen, 2 x 19-pin hardwired outputs, Terminal connectors for input and outputs
GEN12/16W	GenVI Rackmount Dimmer/Distribution 12Ch x 16A - RCBO, 19" 3RU, TruPower, DMX, colour touchscreen, 2 x 19-pin Wieland outputs, 3-phase tail
GEN12/16X	GenVI Rackmount Dimmer/Distribution 12Ch x 16A - RCBO, 19" 3RU, TruPower, DMX, colour touchscreen, 2 x 19-pin Socapex outputs, 3-phase tail
Other O/P's available on request	
6Ch x 25A	
GEN6/25T	GenVI Rackmount Dimmer/Distribution 6Ch x 25A - RCBO, 19" 3RU, TruPower, DMX, colour touchscreen, hardwired, terminal connectors on input and outputs
3Ch x 63C	
GEN3/63C	GenVI Rackmount Dimmer/Distribution 3Ch x 63A - RCBO, 19" 3RU, CEEform 63A, 3-phase tail Note: this model does not include TruPower due to the higher power rating.



GEN12/10A



GenVI Wallmount

A New Era in Power and Dimming Control

Since its release, the GenVI has become LSC's most successful touring dimmer/distribution system. LSC has taken the GenVI technology and re-engineered it into a compact, wallmount chassis specifically for the local installation market. The GenVI Wallmount (GVW) is available with either front-mounted GPO outputs (for use with the popular REDBACK patch bay system) or with internal screw terminals (for use with 1:1 hardwired installations).

When used in conjunction with the REDBACK 144-way patch bay, a complete system comprising up to 96 channels of dimming/power distribution can be installed in a wall space area of 1.8m high x 1.7m wide.

Most importantly, all the controls are at a comfortable work height with no patch leads touching the floor.

Like all LSC products, the GVW is proudly designed and manufactured in Australia and is covered by our industry-leading, two-year parts and labour warranty.

Features

- > User selectable PTFD dimmer or power distribution per channel
- > No minimum load per channel
- > RCBO per channel
- > 10A and 25A per channel output current
- > Low power mode reduces heat loss
- > Colour touchscreen user interface
- > RDM compliant
- > Compact wallmount footprint – same as the older LSC iPro standard footprint
- > Remote monitoring and configuration via Houston X

Code	Description
12Ch x 10A	
GVW12/10T	GenVI Wallmount Dimmer/Distribution 12Ch x 10A - RCBO, TruPower, hardwired
6Ch x 25A	
GVW6/25T	GenVI Wallmount Dimmer/Distribution 6Ch x 25A - RCBO, TruPower, hardwired
Options	
BRKT/UNIS	GVW/TWM Wallmount Unistrut Galvanised Hanging Brackets



GVW12/10A



**Proudly Australian-
owned and operated,
LSC produces 100%
Australian-made
products from design
to manufacture.**

FILMPRO

Robust Dimming for Film and Television

In response to the increasingly complex and challenging demands of the film and television industry, LSC has introduced a range of dimmers specifically designed to meet the needs of the world's biggest film and television lighting-rental companies.

Designed in conjunction with industry specialists, the FILMPRO range has already become the dimmer of choice for rental companies throughout Europe, Asia and South Africa. It has featured in hundreds of feature films and television broadcasts around the world.

Features

- > RCBO protection (optional Neutral Disconnect MCBs where RCDs are not desirable)
- > Rugged construction – made for film production and touring
- > PTFD (Pulse Transformer Fired Dimming) - virtually any load can be dimmed including fluorescents, neon and other complex loads
- > No minimum load per channel
- > Auto fan control (user-defined)
- > Self-terminating DMX input

Code	Description
FILMPRO/1C63	FILMPRO Dimmer 1Ch x 63A - 19" 4RU, 63A CEEform output, 63A CEEform input, single-phase 63A CEE input
FILMPRO/3C25	FILMPRO Dimmer 3Ch x 25A - 19" 4RU, 3 x 32A CEEform outputs, 63A CEEform input, single-phase 63A CEE input
FILMPRO/6C10	FILMPRO Dimmer 6Ch x 10A - 19" 4RU, 6 x 16A CEEform outputs and 1 x Socapex 6Ch output, 1 x 6Ch Socapex non-dim output, single-phase 63A CEE input



FILMPRO/1C63



FILMPRO/6C10



FILMPRO/3C25



EKO

Networked Power Control

The EKO delivers a unique approach to multitasking for today's modern venues. Dedicated stage and house lighting dimming systems are no longer required – the EKO allows the user to decide on the number of channels for stage, for house lights and for direct power.

The innovative design includes a separate installation frame that can be supplied months ahead of the dimmer for pre-installation. This reduces the risk of damage to the unit as well as providing the installer with improved cash flow during a project.

EKO comes standard with TruPower, so each channel can be switched over to provide either standard

dimming or direct power. Circuit Breaker Detection is included, which allows remote monitoring for each channel's MCB status.

LNET ePlate wall-plate controllers (as well as building management systems interface modules) can be connected to form a versatile control network. Connected to HOUSTON allows Real-Time monitoring, and third-party control sources such as Crestron or Pharos, allows the EKO to be controlled from multiple sources seamlessly. The EKO is available in other variants, including 6Ch x 25A and 12Ch x 25A models.

Features

- > User selectable PTFD dimmer or power distribution per channel
- > RCBO per channel
- > No minimum load per channel
- > High-speed backbone network for remote system monitoring/configuration and ePlate control (LNET)
- > 80 internal memories access through LNET and ePlates
- > Touchscreen user interface
- > RDM compliant
- > Separate install frame allows the cabling to be wired then the dimmer fitted

Code	Description
12Ch x 10A	
EKO12/10T	EKO Wallmount Dimmer/Distribution 12Ch x 10A - RCBO, TruPower, DMX, Circuit Breaker Detect, mono touchscreen, LNET, hardwired, 16mm sq screw terminal mains connection, small installation frame
24Ch x 10A	
EKO24/10T	EKO Wallmount Dimmer 24Ch x 10A - RCBO, TruPower, DMX, Circuit Breaker Detect, mono touchscreen, LNET, hardwired, 35mm sq screw terminal mains connection, large installation frame



EKO324/M/B

EKO312 Installation Frame



EKO324 Installed TCN9 Sydney



Gold Coast Arts Centre, QLD



ePlates

Networked Remote-Control Wall Plates

LSC ePlates are designed to complement the EKO and TEKO dimmers. Featuring attractive styling, smart features, user configuration and a range of different control options, the LNET ePlates are a great addition to a venue and will add remote-control functionality to the EKO and TEKO dimmers. Programmed using the free LSC LNET-Toolbox software, users can configure and recall internal memories in the dimmers for replay at a pre-programmed level and with selected fade time.

Houston

Networked Remote Monitoring Software

HOUSTON is a Windows-based PC application that allows remote monitoring of all LNET-enabled products. Operational faults such as phase failure, loss of DMX, circuit breaker tripping and over temperature are sent over the network to one or more PCs running the HOUSTON software. Venue operators and managers can quickly view the nature of the fault, the date/time it occurred and the location. Additionally, the show configuration backup and restore function allows snapshots of the dimmer settings to be stored and recalled as necessary. Perfect for monitoring large-scale venues where the user can monitor an entire dimming system from a central location.

LNET

Advanced Networking Modules

The LNET ePlate wall-plate controllers can be connected to form a versatile control network for the EKO/TEKO dimming systems. Additionally, building management systems and other third-party control systems can be integrated into the network using the LNET interfacing modules. Together these products form a sophisticated and flexible control system.

Code	Description
ePlates	
EP/8B	ePlate - 8 push buttons, LNET, user programmable, CAT5/RJ45 connection
EP/4B	ePlate - 4 push buttons, LNET, user programmable, CAT5/RJ45 connection
EP/2B	ePlate - 2 push buttons, LNET, user programmable, CAT5/RJ45 connection
Houston	
HOUSTON/BR	HOUSTON Software - with dimmer configuration backup and restore functionality, includes LNET/USB interface
LNET	
LNET/232	LNET to RS232 Bi-Directional Interface - allows connection of LNET-enabled devices to third-party control systems (ie Crestron, AMX, Stardraw Control)
LNET/EIM	LNET General Purpose Input Module - provides 8 inputs (voltage free momentary contact closure) for interfacing LNET to BMS or relay controls
LNET/HUB	LNET 5-Way Hub - allows connection of LNET devices in a star topology wiring configuration, includes auto-termination to allow LNET outlet sockets to be used for connection of portable LNET devices
LNET/USB	LNET to USB Interface - DIN rail-mounted device provides a PC USB connection to the LNET network, required for use of LSC Toolbox and/or HOUSTON software
LNET/PSU	LNET DIN Rail-Mounted Power Supply - additional power supply to suit LNET devices



EP/2B



EP/8B



EP/2B



LNET/HUB



HOUSTON / Real Time Status Monitoring



eplate.lscighting.com.au



houston.lscighting.com.au



lnet.lscighting.com.au

**Along with our
commitment to
manufacturing
Australian-made
products, LSC continues
to ensure higher
levels of reliability and
longevity across the
entire range.**

RED3

Simple Power Dimming

The RED3 dimmer is the benchmark for affordable dimming. It was designed to meet the lighting needs of smaller venues including schools, concert halls and places of worship. It has been extensively re-engineered so smaller venues can install a superior, quality LSC dimming system at a fraction of the cost. The RED3 is housed in a 19" 3RU rackmount chassis.

It offers 12 channels of dimming, each protected by a 10A thermal Magnetic Circuit Breaker (MCB). The RED3 also has a 100% duty cycle, ensuring it can run all day and night without issue.

A full-colour touchscreen provides the user with a clear display of dimmer settings and functionality, including DMX address, fade curve, min/max levels and DMX loss action. For convenience, all RED3 dimmers are supplied with a flying mains power lead and a 3-phase plug. And like all LSC products, the RED3 is covered by a two-year warranty and is proudly made in Australia.



Features

- > Robust power dimming
- > MCB per channel
- > Colour touchscreen user interface
- > RDM compliant
- > Multiple output socket options available

Code	Description
RED12/10S	RED3 Rackmount Dimmer 12Ch x 10A - MCB, 19" 3RU, DMX, colour touchscreen, 12 x 3-pin Schuko outputs, 3 phase tail
RED12/10W	RED3 Rackmount Dimmer 12Ch x 10A - MCB, 19" 3RU, DMX, colour touchscreen, 2 x 16-pin Wieland outputs, 3 phase tail
RED12/10X	RED3 Rackmount Dimmer 12Ch x 10A - MCB, 19" 3RU, DMX, colour touchscreen, 2 x 19-pin Socapex outputs, 3 phase tail



RED3 12 Ch x 10A



REDBACK Wallmount

Simple Power Dimming

The REDBACK Wallmount has been designed to solve a common problem facing modern venues – how to control conventional lights using dimming technology and provide clean power to intelligent fixtures and LEDs – all in one package. The REDBACK Wallmount offers a true switched power (relay) control option that can be specified with all outputs as dimmers or relays only, or a combination of both. The switched power channel outputs provide direct power by using relays, guaranteeing no electronics will interfere with connected loads.

Available in a variety of models to suit different venues' needs, the REDBACK range are slimline wall-mounted units. This allows them to be placed in areas

with limited depth such as narrow cupboards, walkways or catwalks. The easy-to-use colour LCD touchscreen guides the user through functions such as DMX address setting, scene memories, full Softpatch, panic input set-up, dimmer curves, display of channel levels, min and max level settings and channel test modes. The REDBACK Wallmount range can also interface with a selection of LSC wall plates, enabling remote control of memories as well as allowing connection to third-party devices (that utilise momentary contact closure).

New for
2019

New for 2019

- > Individual manual Bypass switch per channel, to power non-dim loads
- > Redwall is now only available with RCBO per channel, as required by AS3000:2018



External DMX Plate



REDBACK Wall Plates



REDBACK Wallmount

Code	Description
12 Ch Wallmount Dimmer	
RBW12/UK	Redback Wallmount 12 channel x 10A Dimmer with 15A UK Outlets
RBW12/G	Redback Wallmount 12 channel x 10A Dimmer with Dual GST Dimmed Outlets and One GST HotPower Outlet per channel
RBW12/T	Redback Wallmount 12 channel x 10A Dimmer with internal Screw Terminal Outlets
RBW12/R/UK	Redback Wallmount 12 channel x 10A Dimmer with 15A UK Outlets and one 3-phase RCD Input Protection breaker
RBW12/R/G	Redback Wallmount 12 channel x 10A Dimmer with Dual GST Dimmed Outlets and One GST HotPower Outlet per channel with one 3-phase RCD Input Protection breaker
RBW12/R/T	Redback Wallmount 12 channel x 10A Dimmer with internal Screw Terminal Outlets with one 3-phase RCD Input Protection breaker
/ND	Neutral Disconnect per channel for above models
12 Ch Wallmount Dimmer/Relay combo	
RBW12/K/UK	Redback Wallmount 6 channel x 10A Dimmers plus 6 channel x 10A DMX controlled Relay Switch with 15A UK Outlets
RBW12/K/T	Redback Wallmount 6 channel x 10A Dimmers plus 6 channel x 10A DMX controlled Relay Switch with internal Screw Terminal Outlets
RBW12/K/R/UK	Redback Wallmount 6 channel x 10A Dimmers plus 6 channel x 10A DMX controlled Relay Switch with 15A UK Outlets and 3-phase RCD Input Protection breaker
RBW12/K/R/T	Redback Wallmount 6 channel x 10A Dimmers plus 6 channel x 10A DMX controlled Relay Switch with internal Screw Terminal Outlets and one 3-phase RCD Input Protection breaker
12 Ch Wallmount Relay	
RBW12/C/UK	Redback Wallmount 12 channel x 10A DMX controlled Relay Switch with 15A UK Outlets
RBW12/C/T	Redback Wallmount 12 channel x 10A DMX controlled Relay Switch with internal Screw Terminal Outlets
RBW12/C/R/UK	Redback Wallmount 12 channel x 10A DMX controlled Relay Switch with 15A UK Outlets and one 3-phase RCD Input Protection breaker
RBW12/C/R/T	Redback Wallmount 12 channel x 10A DMX controlled Relay Switch with internal Screw Terminal Outlets with one 3-phase RCD Input Protection breaker
24 Ch Wallmount Dimmer	
RBW24/G	Redback Wallmount 24 channel x 10A Dimmer with Dual GST Dimmed Outlets and One GST HotPower Outlet per channel
RBW24/T	Redback Wallmount 24 channel x 10A Dimmer with internal Screw Terminal Outlets
RBW24/R/G	Redback Wallmount 24 channel x 10A Dimmer with Dual GST Dimmed Outlets and One GST HotPower Outlet per channel and three single-phase RCD Input Protection breakers
RBW24/R/T	Redback Wallmount 24 channel x 10A Dimmer with internal Screw Terminal Outlets with three single-phase RCD Input Protection breakers
24 Ch Wallmount Dimmer/Relay combo	
RBW24/K/T	Redback Wallmount 18 channel x 10A Dimmers plus 6 channel x 10A DMX controlled Relay Switch with internal Screw Terminal Outlets
RBW24/K/R/T	Redback Wallmount 18 channel x 10A Dimmers plus 6 channel x 10A DMX controlled Relay Switch with internal Screw Terminal Outlets and three single-phase RCD Input Protection breakers
24 Ch Wallmount Relay	
RBW24/C/T	Redback Wallmount 24 channel x 10A DMX controlled Relay Switch with internal Screw Terminal Outlets
RBW24/C/R/T	Redback Wallmount 24 channel x 10A DMX controlled Relay Switch with internal Screw Terminal Outlets with three single-phase RCD Input Protection breakers
Redback Wall Plates	
RBR/1	1 button wall plate remote for Redback Wall racks
RBR/2	2 button wall plate remote for Redback Wall racks
RBR/6	6 button wall plate remote for Redback Wall racks
RBR/PB	1 button PANIC wall plate remote for Redback Wall racks
RBR/KS	1 keyswitch PANIC Reset wall plate remote for Redback Wall racks

REDBACK Patch Bay

Flexible Patching

Although originally designed to complement the REDBACK Wallmount series of installation dimmers, the REDBACK Patch Bays are equally at home when used with any other dimmer requiring patching. Reflecting the same styling as the REDBACK wallmount range, the result is a highly compact series of patch bays that offer the user unhindered access and ease of use. The optional Test Module completes the range, offering safe and reliable load and source testing with overload indicators and circuit protection.

It has a modular design, four chassis sizes are available and there is also a Test Module option.

Features

- > Modular design
- > Four chassis sizes available
- > Test module option



RBP/24/T



RBP/T

Code	Description
------	-------------

Redback Wallmount Patchbay system

RBP/12/G	Redback Patch - Modular patchbay with 12 GST patch leads (expandable to 36 ccts)
RBP/24/G	Redback Patch - Modular patchbay with 24 GST patch leads (expandable to 36 ccts)
RBP/36/G	Redback Patch - Modular patchbay with 36 GST patch leads (not expandable)
RBP/48/G	Redback Patch - Modular patchbay with 48 GST patch leads (expandable to 72 ccts)
RBP/60/G	Redback Patch - Modular patchbay with 60 GST patch leads (expandable to 72 ccts)
RBP/72/G	Redback Patch - Modular patchbay with 72 GST patch leads (not expandable)
RBP/84/G	Redback Patch - Modular patchbay with 84 GST patch leads (expandable to 120 ccts)
RBP/96/G	Redback Patch - Modular patchbay with 96 GST patch leads (expandable to 120 ccts)
RBP/108/G	Redback Patch - Modular patchbay with 108 GST patch leads (expandable to 120 ccts)
RBP/120/G	Redback Patch - Modular patchbay with 120 GST patch leads (not expandable)

Redback Wallmount Patchbay system with Test Module

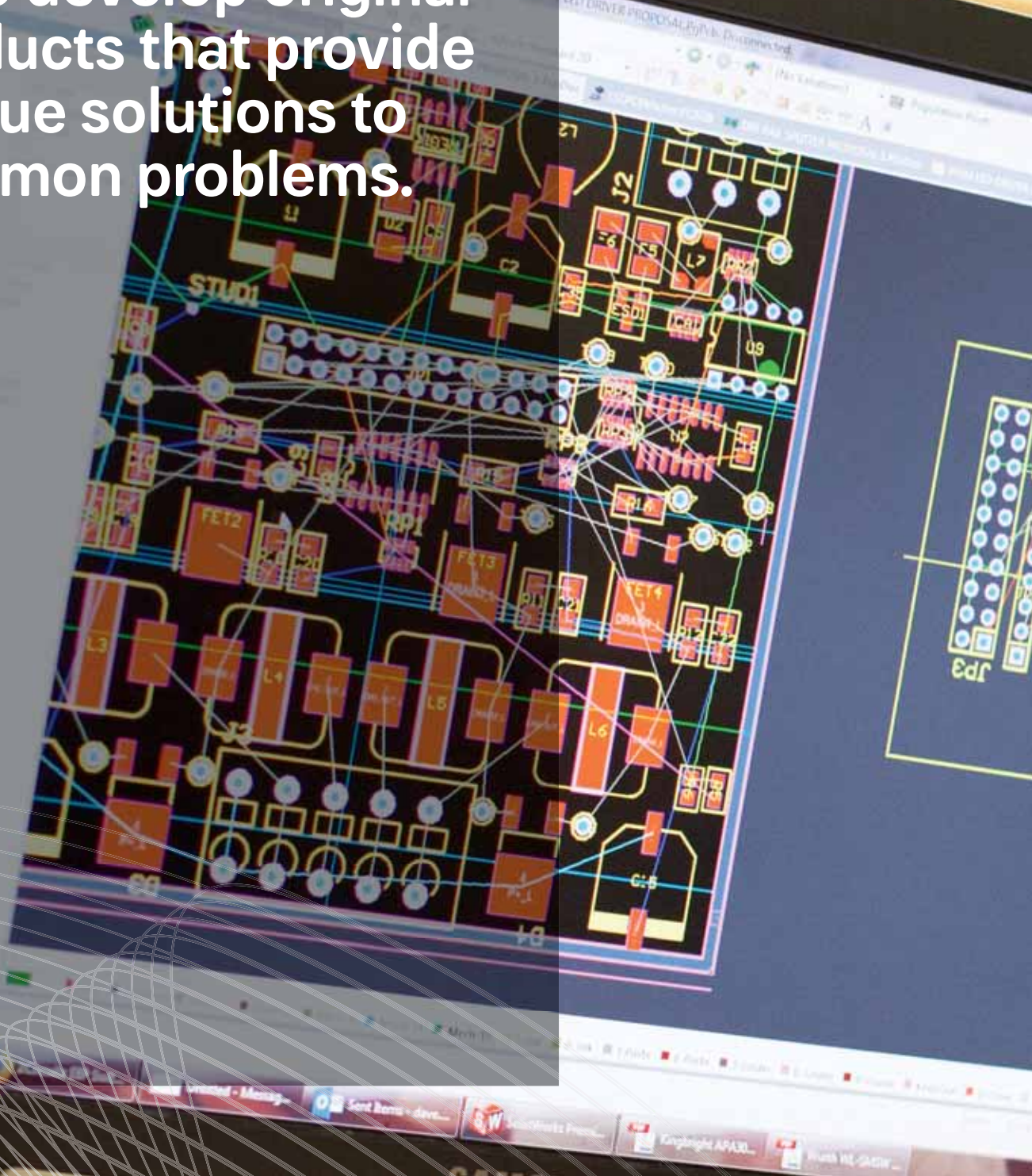
RBP/12/G/T	Redback Patch - Modular patchbay with 12 GST patch leads (expandable to 36 ccts) with Test Module
RBP/24/G/T	Redback Patch - Modular patchbay with 24 GST patch leads (expandable to 36 ccts) with Test Module
RBP/36/G/T	Redback Patch - Modular patchbay with 36 GST patch leads (not expandable) with Test Module
RBP/48/G/T	Redback Patch - Modular patchbay with 48 GST patch leads (expandable to 72 ccts) with Test Module
RBP/60/G/T	Redback Patch - Modular patchbay with 60 GST patch leads (expandable to 72 ccts) with Test Module
RBP/72/G/T	Redback Patch - Modular patchbay with 72 GST patch leads (not expandable) with Test Module
RBP/84/G/T	Redback Patch - Modular patchbay with 84 GST patch leads (expandable to 120 ccts) with Test Module
RBP/96/G/T	Redback Patch - Modular patchbay with 96 GST patch leads (expandable to 120 ccts) with Test Module
RBP/108/G/T	Redback Patch - Modular patchbay with 108 GST patch leads (expandable to 120 ccts) with Test Module
RBP/120/G/T	Redback Patch - Modular patchbay with 120 GST patch leads (not expandable) with Test Module

Modules Only - for use in 3rd party 19" Rack Cabinets (please note cabinet must be fingerproof)

RBP/G/T	1RU Redpatch Test Module - complete with 10A GST test outlet and MCB, 50w test load and Ammeter
RBP/G	1RU Redback patch panel with 12 leads (requires an RBP/B1 below bottom module in rack)
RBP/B1	1RU Redback patch panel Blank module
RBP/CMS	Cable management system for Redback Patchbays



LSC has a long and proud history of innovation. Our R&D team continually creates new products based on direct market feedback. This has led us to develop original products that provide unique solutions to common problems.



APS Rackmount

Configurable Power Distribution

Power distribution is one of the most critical components of any lighting system. Yet most other power distribution products are little more than circuit breakers and cabling in a box. The Advanced Power System (APS) is much more.

The APS is ideal for all venues where efficient energy management is a key goal. By using APS modules in auto power mode all the LED fixtures, video screens and moving lights will automatically be powered off a few minutes after the lighting console is turned off. When the console is next turned on, the lighting and video equipment will sequentially power-up without any user intervention.



Features

- > Staggered start of outputs to reduce main circuit breaker nuisance tripping
- > DMX or automatic control configurable
- > Voltage/current monitoring with over/under voltage protection
- > RCBO per channel
- > Tru relay switching – not solid state
- > Colour touchscreen user interface
- > RDM compliant
- > Multiple output connector options available
- > Remote monitoring and configuration via Houston X

New for 2019

- > DMX relay mode – configurable per channel
- > Zero-cross switching – reduces nuisance tripping
- > Force channels On – ideal for anything requiring constant power

Code	Description
12Ch x 10A	
APS12/10S	APS Rackmount Power Distribution 12Ch x 10A - RCBO, 19" 3RU, Schuko outputs, 3-phase tail
APS12/10T	APS Rackmount Power Distribution 12Ch x 10A - RCBO, 19" 3RU, Terminal input and output connectors
APS12/10W	APS Rackmount Power Distribution 12Ch x 10A - RCBO, 19" 3RU, Wieland outputs, 3-phase tail
APS12/10X	APS Rackmount Power Distribution 12Ch x 10A - RCBO, 19" 3RU, 2 x 19-pin Socapex outputs, 3-phase tail
APS12/10P	APS Rackmount Power Distribution 12Ch x 103A - RCBO, 19" 3RU, 12 x powerCON outputs, 3-phase tail
12Ch x 16A	
APS12/16S	APS Rackmount Power Distribution 12Ch x 16A - RCBO, 19" 3RU, Schuko outputs, 3-phase tail
APS12/16T	APS Rackmount Power Distribution 12Ch x 16A - RCBO, 19" 3RU, Terminal input and output connectors
APS12/16W	APS Rackmount Power Distribution 12Ch x 16A - RCBO, 19" 3RU, Wieland outputs, 3-phase tail
APS12/16X	APS Rackmount Power Distribution 12Ch x 16A - RCBO, 19" 3RU, Socapex outputs, 3-phase tail
APS12/16P	APS Rackmount Power Distribution 12Ch x 16A - RCBO, 19" 3RU, 12 x Powercon outputs, 3-phase tail
Other outputs available on request	
6Ch x 25A	
APS6/25T	APS Rackmount Power Distribution 6Ch x 25A - RCBO, 19" 3RU, Terminal, 3-phase tail



Schuko Outputs



Socapex Outputs



Terminal Outputs



APS Wallmount

Configurable Power Distribution

The Advanced Power System Wallmount (APW) is a wall-mounted version of the APS smart power distro. It uses the proven chassis of the GenVI Wallmount and TEKO Wallmount dimmer racks, combined with the intelligence of the APS to provide the missing link in any dimmer and power distribution installation. It is available in a hardwired version or with front-mounted sockets to enable it to be used with existing patch panel systems.

The APW utilises a unique two-part body where the rear casing can be removed and mounted to the wall prior to the main body being attached. This system makes

installation easier and safer, as the rear section weighs less than 5kg, making it manageable by one person. To avoid accidental damage all the data connections are on the side of the unit, which offers both cable management and separation of mains and data.

Features

- > Staggered start of outputs to reduce main circuit breaker nuisance tripping
- > DMX or automatic control configurable
- > Voltage/current monitoring with over/under voltage protection
- > RCBO per channel
- > Tru relay switching – not solid state
- > Colour touchscreen user interface
- > RDM compliant
- > Compact wallmount footprint – same as the older LSC iPro standard footprint
- > Remote monitoring and configuration via Houston X

New for 2019

- > DMX relay mode – configurable per channel
- > Zero cross-switching – reduces nuisance tripping
- > Force channels On – ideal for anything requiring constant power

Code	Description
12Ch x 10A	
APW12/10T	APS Wallmount Power Distribution 12Ch x 10A - RCBO, hardwired
6Ch x 25A	
APW6/25T	APS Wallmount Power Distribution 6Ch x 25A - RCBO, hardwired
Options	
BRKT/UNIS	GVW/TWM Wallmount Unistrut Galvanised Hanging Brackets (Pair)



Voltage and current



Stand alone mode



Config menu



APW12/10T



PowerPoint

Simple Power Distribution

The PowerPoint Power Distribution System is designed for applications where fixed or mobile power distribution is required. It offers a 4-pole mains input isolator switch with RCBO per output channel or Neutral Disconnect circuit breakers as an option if RCBO is not desirable. There is also neon phase indication to show power input to the rack.

Circuit rating can be specified as either 12 x 10A, 12 x 16A or 6 x 25A. Back-panel options include either Australian 3-pin GPO, Socapex, Harting/Wieland, terminal outputs, powerCON and powerCON True1. PowerPoint also comes with a 1m mains power cable with plug fitted on all models except the hardwired version.



Features

- > Main isolator switch
- > Indicator per phase
- > RCBO per channel
- > Multiple output connector options available

Code	Description
12Ch x 10A	
PWP12/10S	PWP Rackmount Power Distribution 12Ch x 10A - RCBO, 19" 3RU, Schuko outputs, 3-phase tail
PWP12/10T	PWP Rackmount Power Distribution 12Ch x 10A - RCBO, 19" 3RU, Terminal input and output connectors
PWP12/10W	PWP Rackmount Power Distribution 12Ch x 10A - RCBO, 19" 3RU, Wieland outputs, 3-phase tail
PWP12/10X	PWP Rackmount Power Distribution 12Ch x 10A - RCBO, 19" 3RU, Socapex outputs, 3-phase tail
PWP12/10P	PWP Rackmount Power Distribution 12Ch x 10A - RCBO, 19" 3RU, 12 x powerCON outputs, 3-phase tail
12Ch x 16A	
PWP12/16X	PWP Rackmount Power Distribution 12Ch x 16A - RCBO, 19" 3RU, Socapex outputs, 3-phase tail
Other O/P's available on request	
6Ch x 25A	
PWP6/25T	PWP Rackmount Power Distribution 6Ch x 25A - RCBO, 19" 3RU, Terminal input and output connectors



PWP12/10A



LDT

LED Drive Technology

LDT was designed to provide professional, theatre-quality dimming through dimmable LED globes, suitable for retrofit installations and new fit-outs. Many LED globes and LED controllers claim to dim LED lamps but a large proportion drop out at 20% to 40% power or flicker when used at low power levels.

This makes them unsuitable for venues with in-house lighting systems such as theatres, places of worship and cinemas where smooth dimming to 0% is required.

LDT uses patented LED Drive Technology that improves control of dimmable LED globes. If a LED can be dimmed, the LDT will do it better than any other dimmer available. Easy stand-alone control is provided by the REDBACK wall plates and LDT can also switch to DMX control when required.

Features

- > Dims dimmable LEDs down to less than 1% drive
- > Each channel dims either conventional tungsten loads or LED
- > MCB per channel
- > Colour touchscreen user interface
- > RDM compliant
- > Wall-plate and building management interfaces
- > Internal memories, emergency backup memory and DMX loss memory

Code	Description
LED Drive Technology	
LDT6/B	LDT Wallmount LED Dimmer 6Ch x 10A - RCBO, DMX, LED Drive Technology, colour touchscreen, wall-plate control, fire panel input, hardwired
LDT12/B	LDT Wallmount LED Dimmer 12Ch x 10A - RCBO, DMX, LED Drive Technology, colour touchscreen, wall-plate control, fire panel input, hardwired
RBP Wall Plates	
RBR/1	REDBACK/LDT Wallmount Range Wall-Plate Remote - 1-button panel
RBR/2	REDBACK/LDT Wallmount Range Wall-Plate Remote - 2-button panel
RBR/6	REDBACK/LDT Wallmount Range Wall-Plate Remote - 6-button panel

LDT



SORAA MR16 - GU10



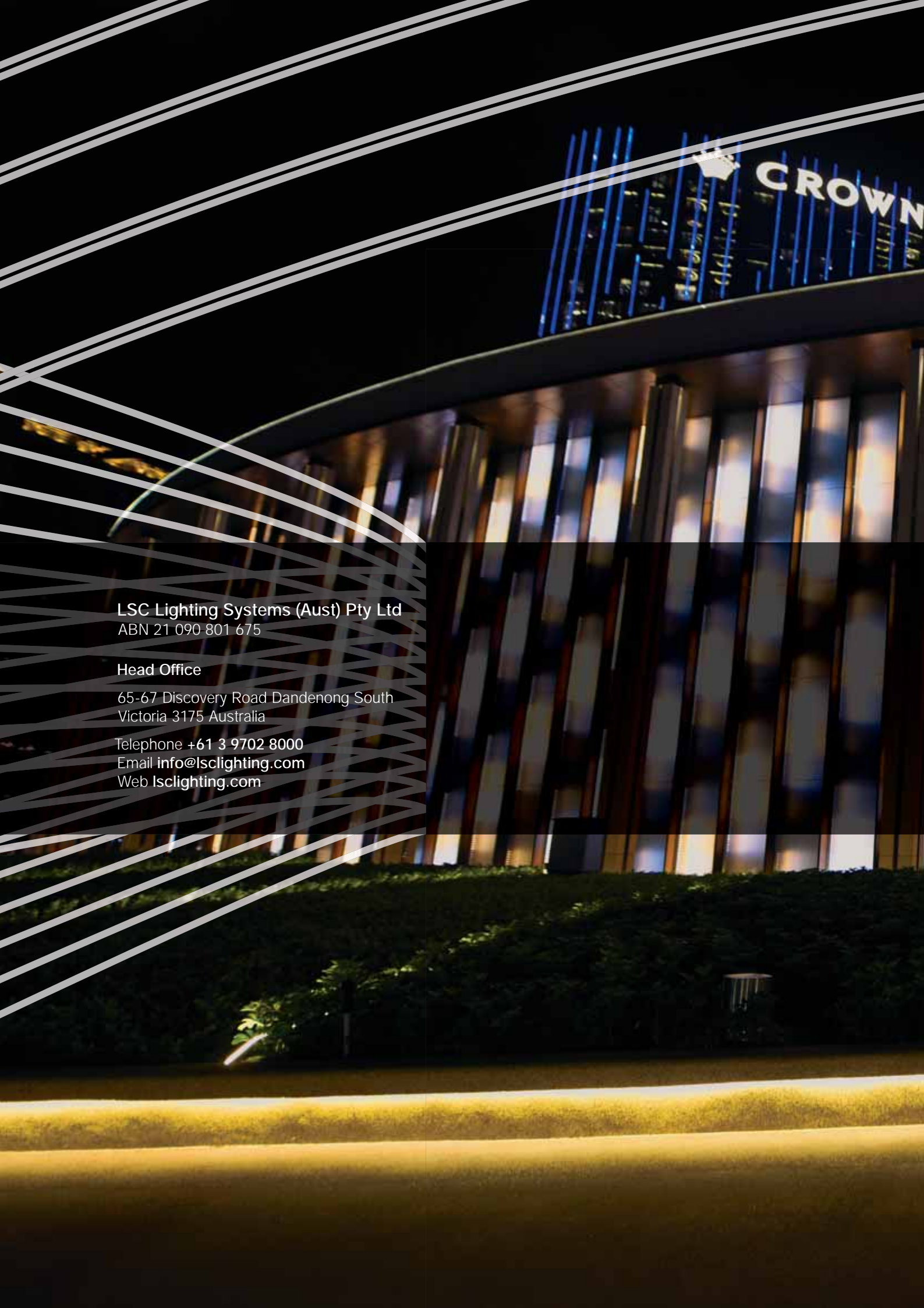
LED PAR38



Projects, Tours and Installs

Warner Bros Theme Park, Abu Dhabi
 Star Wars, Pinewood Studios
 Alabama – USA Tour
 Channel 9 TV, Australia
 FloydFest, USA
 Studio City, Macau
 Public Enemy, USA
 LL Cool J, USA
 ABC TV Studios, Melbourne and Sydney
 Channel 4 TV Studios, London
 HSBC Headquarters, Hong Kong
 Outside Lands Festival, USA
 Geelong College, Australia
 Glastonbury Festival, UK
 Cut Copy – World Tour
 Ice T – USA Tour
 Selah Sue – European Tour
 Hawkes Bay Opera House, New Zealand
 National Gallery, Bangladesh
 Coca-Cola Billboard, Kings Cross, Sydney
 Nurburgring, Germany
 State Theatre, Arts Centre Melbourne, Australia
 NTV Studios, Turkey
 Marina Bay Sands, Singapore
 King Faisal University, Saudi Arabia
 Sky TV, Middle East
 Chelsea FC TV Studios, UK
 Hooverphonics – European Tour
 Ozark Henry – European Tour
 Kasabian – European Tour
 BBC TV, UK
 deSingel International Arts Center, Antwerp, Belgium
 QVC TV, London
 Grosvenor House Hotel, London
 Channel 7, Australia
 Foxtel TV, Australia
 ITV, UK
 Hillsong Church Convention Centre, Australia
 Melbourne Museum, Australia
 Vancouver Winter Olympics, Canada
 Kämp Bar, Hotel Kämp, Finland
 The Orangerie, Maritim Hotel, Germany
 DJ Tiesto – Australasian Tour
 Kingsmead School, UK
 Primus Festival, Democratic Republic of Congo
 Universidad Tecnica Federico, Spain
 Gladstone Entertainment Convention Centre, Australia
 Wolfmother – World Tour
 The Arts Centre Gold Coast, Australia
 Eurovision Song Contest, Norway
 Logie Awards, Australia
 Redcliffe Cultural Centre, Australia
 Erykah Badu – World Tour
 Kimbra – World Tour

Karratha Arts and Community Precinct, Australia
 Rugby World Cup, New Zealand
 Furthur – USA Tour
 Wodonga Performing Arts Centre, Australia
 Strawberry Fields Festival, UK
 Paralympics London 2012, UK
 Warner Bros, UK
 The National Theatre, London, UK
 Nina Badric Tour – Belgrade, Serbia
 Brisbane Entertainment Centre, Australia
 Panavision Film & Broadcast, UK
 Queensland Performing Arts Centre, Australia
 Mackay Entertainment Centre, Australia
 Sasani TV Studios, Johannesburg, South Africa
 Festival of Light, Latvia
 World Expo, Japan
 Lord of The Rings, New Zealand
 Everyman Theatre, Liverpool, UK
 Putrajaya Convention Centre, Malaysia
 Mostar Bridge, Bosnia Herzegovina
 Adelaide Convention Centre, Australia
 Stratford College, UK
 The Esplanade Theatres, Singapore
 Gold Coast Cultural Precinct, Australia
 Bolshoi Ballet, Russia
 Allhambra Palace, Spain
 The Power Station, Singapore
 Canal 9, Argentina
 Nova TV, Croatia
 Teatro Alcobendas, Spain
 Stratford College, UK
 Trinity Laban Dance College, UK
 Crown Casino, Australia
 World Expo, China
 Jupiters Casino Theatre, Australia
 Sochi Winter Olympics
 2014 World Cup, ITV Studios, Brazil
 Vietnam Idol, Vietnam
 Depeche Mode – European Tour
 Freestyler Club, Serbia
 Brolga Theatre and Convention Centre, Maryborough, Australia
 Seymour Centre, Sydney
 Gardens Point Theatre, Brisbane
 The Events Centre, Caloundra, Queensland
 Nambour Civic Centre, Queensland
 TAFE Queensland Gold Coast, Australia
 TAFE Kelvin Grove, Brisbane
 Monash University, Melbourne
 Joan Sutherland Performing Arts Centre, Penrith
 South Bank TAFE, Brisbane
 ABC Studios, Brisbane
 Brisbane Convention & Exhibition Centre
 Moncrieff Theatre, Bundaberg
 Pilbeam Theatre, Rockhampton



LSC Lighting Systems (Aust) Pty Ltd
ABN 21 090 801 675

Head Office

65-67 Discovery Road Dandenong South
Victoria 3175 Australia

Telephone **+61 3 9702 8000**
Email info@lsclighting.com
Web lsclighting.com